

LEA Name : Hatboro-Horsham SD
Address : 229 Meetinghouse Rd
Horsham , PA 19044

County : Montgomery
AUN Number : 123463603
LEA Type : SD

Annual Financial Report Accuracy Certification Statement

For Fiscal Year Ending
6/30/2019

Pennsylvania Department of Education
&

Office of Comptroller Operations

PDE-2056: Intermediate Unit

PDE-2057: School District, AVTS/CTC, Charter School,
and Special Program Jointure

CERTIFICATION: By signing this page I agree that the electronic data submitted is a complete and accurate statement of the financial operations and status of the local education agency for the fiscal year. It has been prepared in accordance with generally accepted accounting principles and established Commonwealth of PA reporting guidelines.


Chief School Administrator Signature

11/15/19
Date


Board Secretary Signature

11/15/2019
Date

Robert A Reichert

Contact Person

rreicher@hatboro-horsham.org

Contact Person E-mail Address

(215)420-5007 Ext :

Contact Person Telephone Number

(215)420-5262

Contact Person Fax Number

Audit Certification
Annual Financial Report:
For Fiscal Year Ending **6/30/2019**
(Pursuant to PA School Code Section 218(b))

LEA Name : Hatboro-Horsham SD
AUN Number : 123463603
County : Montgomery

Audit Certification Due: 12/31/2019

This certification is applicable to the Annual Financial Report data submitted through the Consolidated Financial Reporting System on: 11/15/2019
Date

Auditing Firm:
Maillie, LLP

CERTIFICATION: By signing this page I agree that the financial statements of the school have been properly audited as noted above pursuant to Article XXIV, and in the auditor's professional opinion, the Annual Financial Report (PDE-2057) submitted on the date referenced is materially consistent with the audited financial statements.

Chief School Administrator


Signature

12/16/19
Date

Board Secretary


Signature

12/16/19
Date

Robert A Reichert

Contact Person

rreicher@hatboro-horsham.org

Contact Person E-mail Address

(215)420-5007

Ext :

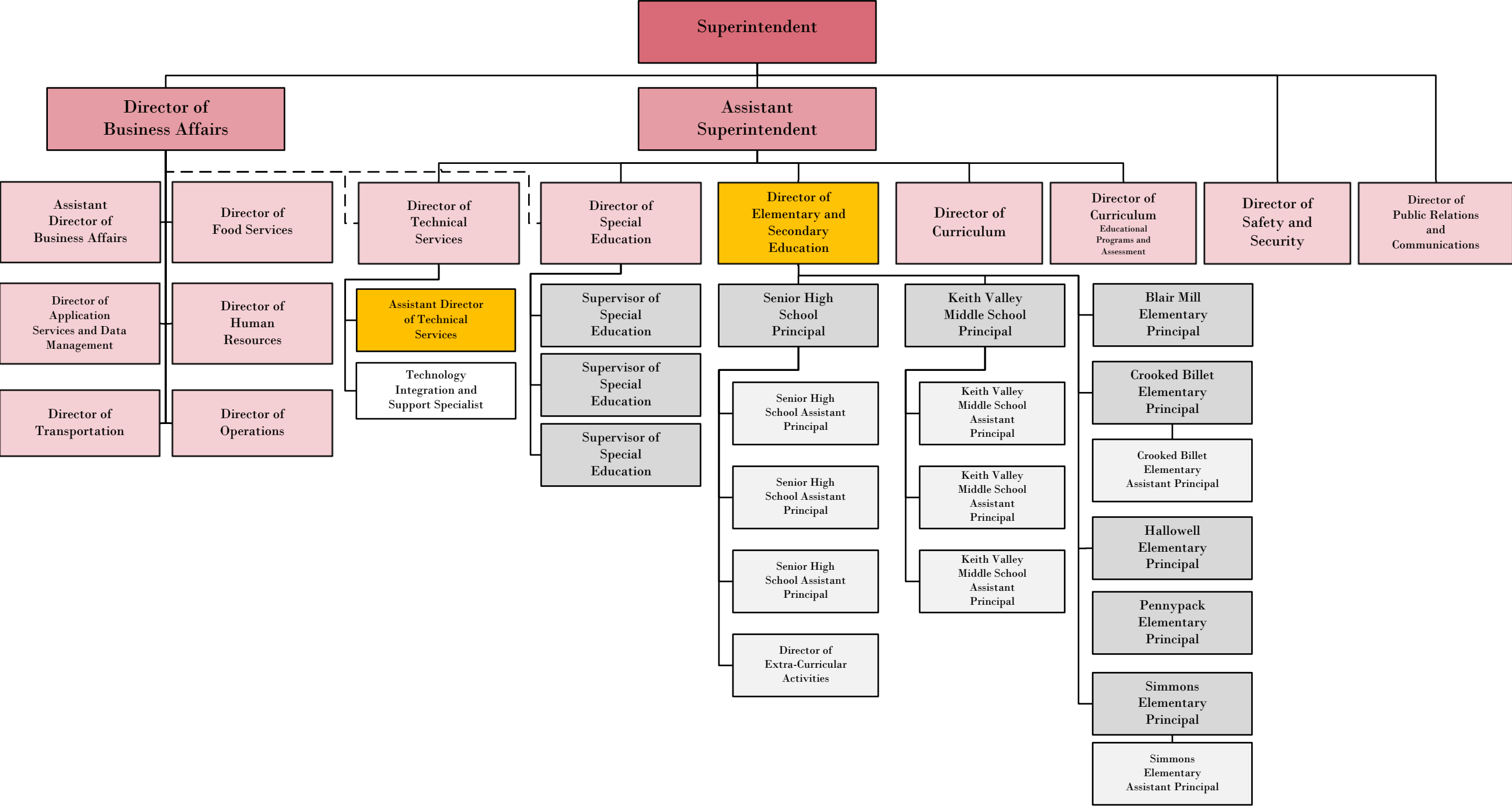
Contact Person Telephone Number

(215)420-5262

Contact Person Fax Number

Hatboro-Horsham School District

Administrative Staffing



<u>Val Number</u>	<u>Description</u>	<u>Justification</u>
42420	<p>Expenditure Detail: Total current year 2700-513 expenditure varies from prior year by 10%. Correct the data or enter a justification.</p> <p>2700-513, AFR Exp Detail: \$643,569.54 2700-513, PY AFR Amount: \$472,168.45</p>	<p>The District experienced a significant increase in the cost of transportation related to McKinney-Vento transportation requirements from the prior year.</p>
50160	<p>SOIN: All Governmental Fund General Obligation Bonds must include an amount for Interest Paid during Fiscal Year. Correct data or enter a justification.</p>	<p>The District issued Bonds Series 2019 that settled in 2/2019 but no debt service was required to be paid during the 2018-19 Fiscal Year, the first payment of principal and interest did not take place until 9/2019 (FY 2019-20).</p>
50450	<p>SESS - 2350 Legal and Accounting Services: SESS Schedule amounts for Special Education vary from prior year by 40% or more. Correct the data or enter a justification.</p> <p>SESS Schedule 2350: \$44,389.55 Prior Year SESS Schedule 2350: \$26,583.10</p>	<p>The District classified a separate account to record all special education related legal costs, allowing for a more specific cost breakdown rather than an allocated cost related to special education, in addition there were increased legal costs here.</p>

LEA : 123463603 Hatboro-Horsham SD

Printed 1/2/2020 9:52:47 AM

Amounts Expressed in Whole Dollars		<u>General Fund</u> <u>(10)</u>	<u>Public Purpose Trust</u> <u>(27)</u>	<u>Other Compt Approved</u> <u>(28)</u>	<u>Athletic / Activity</u> <u>(29)</u>	<u>Capital Reserve (690.</u> <u>1850)</u> <u>(31)</u>
Assets And Deferred Outflows Of Resources						
Assets						
0100	Cash and Cash Equivalents	210				
0110	Investments	34,834,337				
0120	Taxes Receivable					
0130	Due From Other Funds	148,129				
0141	Due From Other Governments					
0142	State Revenue Receivable	2,547,022				
0143	Federal Revenue Receivable					
0145	Other Intergovernmental Revenue Receivable	1,078,950				
0146	Due from Primary Government					
0147	Due from Component Unit					
0150	Other Receivables	405,267				
0170	Inventories					
0180	Prepaid Expenses (Expenditures)	103,393				
0190	Other Current Assets	1,784				
Total Assets		\$39,119,092				
0910	Deferred Outflows of Resources					
Total Assets And Deferred Outflows Of Resources		\$39,119,092				

LEA : 123463603 Hatboro-Horsham SD

Printed 1/2/2020 9:52:47 AM

Amounts Expressed in Whole Dollars	Capital Reserve (1431) (32)	Other Capital Projects Fund (39)	Debt Service (40)	Permanent (90)	Total Governmental Funds
Assets And Deferred Outflows Of Resources					
Assets					
0100 Cash and Cash Equivalents					210
0110 Investments	11,758,963	21,742,137	6,514,912		74,850,349
0120 Taxes Receivable					
0130 Due From Other Funds	2,300,000		2,600,000		5,048,129
0141 Due From Other Governments	289,954				289,954
0142 State Revenue Receivable					2,547,022
0143 Federal Revenue Receivable					
0145 Other Intergovernmental Revenue Receivable					1,078,950
0146 Due from Primary Government					
0147 Due from Component Unit					
0150 Other Receivables					405,267
0170 Inventories					
0180 Prepaid Expenses (Expenditures)					103,393
0190 Other Current Assets					1,784
Total Assets	\$14,348,917	\$21,742,137	\$9,114,912		\$84,325,058
0910 Deferred Outflows of Resources					
Total Assets And Deferred Outflows Of Resources	\$14,348,917	\$21,742,137	\$9,114,912		\$84,325,058

Amounts Expressed in Whole Dollars		<u>General Fund</u> <u>(10)</u>	<u>Public Purpose Trust</u> <u>(27)</u>	<u>Other Compt Approved</u> <u>(28)</u>	<u>Athletic / Activity</u> <u>(29)</u>	<u>Capital Reserve (690.</u> <u>1850)</u> <u>(31)</u>
Liabilities And Deferred Inflows Of Resources And Fund Balances						
Liabilities						
0400	Due to Other Funds	8,631,124				
0411	Due to Other Governments					
0412	Due to Primary Government					
0413	Due to Component Unit					
0420	Accounts Payable	2,843,451				
0430	Contracts Payable					
0440	Current Portion of Long-Term Debt					
0450	Short-Term Payables					
0461	Accrued Salaries and Benefits	6,949,914				
0462	Payroll Deductions and Withholding					
0480	Unearned Revenues	346,600				
0490	Other Current Liabilities	117,002				
Total Liabilities		\$18,888,091				
0950	Deferred Inflows of Resources					
Fund Balances						
0810	Nonspendable Fund Balance					
0820	Restricted Fund Balance					
0830	Committed Fund Balance	10,577,216				
0840	Assigned Fund Balance	3,050,000				
0850	Unassigned Fund Balance	6,603,785				
Total Fund Balances		\$20,231,001				
Total Liabilities, Deferred Inflows Of Resources And Fund Balances		\$39,119,092				

LEA : 123463603 Hatboro-Horsham SD

Printed 1/2/2020 9:52:47 AM

Amounts Expressed in Whole Dollars		<u>Capital Reserve (1431)</u> <u>(32)</u>	<u>Other Capital Projects</u> <u>Fund</u> <u>(39)</u>	<u>Debt Service</u> <u>(40)</u>	<u>Permanent</u> <u>(90)</u>	<u>Total Governmental</u> <u>Funds</u>
Liabilities And Deferred Inflows Of Resources And Fund Balances						
Liabilities						
0400	Due to Other Funds					8,631,124
0411	Due to Other Governments					
0412	Due to Primary Government					
0413	Due to Component Unit					
0420	Accounts Payable	475,590	2,652,599			5,971,640
0430	Contracts Payable					
0440	Current Portion of Long-Term Debt					
0450	Short-Term Payables					
0461	Accrued Salaries and Benefits					6,949,914
0462	Payroll Deductions and Withholding					
0480	Unearned Revenues					346,600
0490	Other Current Liabilities					117,002
Total Liabilities		\$475,590	\$2,652,599			\$22,016,280
0950	Deferred Inflows of Resources					
Fund Balances						
0810	Nonspendable Fund Balance					
0820	Restricted Fund Balance					
0830	Committed Fund Balance	13,873,327	19,089,538			43,540,081
0840	Assigned Fund Balance			9,114,912		12,164,912
0850	Unassigned Fund Balance					6,603,785
Total Fund Balances		\$13,873,327	\$19,089,538	\$9,114,912		\$62,308,778
Total Liabilities, Deferred Inflows Of Resources And Fund Balances		\$14,348,917	\$21,742,137	\$9,114,912		\$84,325,058

Amounts Expressed in Whole Dollars	<u>General Fund</u> <u>(10)</u>	<u>Public Purpose Trust</u> <u>(27)</u>	<u>Other Compt Approved</u> <u>(28)</u>	<u>Athletic / Activity</u> <u>(29)</u>	<u>Capital Reserve (690.</u> <u>1850)</u> <u>(31)</u>
Revenues					
6000 Revenue from Local Sources	82,943,235				
7000 Revenue from State Sources	20,702,279				
8000 Revenue from Federal Sources	1,565,613				
Total Revenues	\$105,211,127				
Expenditures					
1000 Instruction	57,653,801				
2000 Support Services	33,931,471				
3000 Operation of Non-Instructional Services	1,528,028				
4000 Facilities Acquisition, Construction and Improvement Services	20,868				
5110 Debt Service	5,899,948				
5130 Refund of Prior Year Revenues / Receipts	405,131				
Total Expenditures	\$99,439,247				
Excess (Deficiency) Of Revenues Over Expenditures	\$5,771,880				
Other Financing Sources (Uses)					
9110 Face Value of Bonds Issued					
9120 Proceeds from Refunding of Bonds					
9130 Bond Premiums					
9200 Proceeds from Extended-Term Financing					
9300 Interfund Transfers - IN					
9400 Sale of or Compensation for Loss of Fixed Assets	900				
9710 Transfers from Component Units					
9720 Transfers from Primary Governments					
9910 Other Financing Sources Not Listed in the 9000 Series					
9990 Insurance Recoveries					
5120 Debt Service – Refunded Bonds					
5150 Bond Discounts					
5200 Interfund Transfers – Out	4,900,000				
5300 Transfers Out to Component Units/Primary Governments					
Total Other Financing Sources (Uses)	(\$4,899,100)				

LEA : 123463603 Hatboro-Horsham SD

Printed 1/2/2020 9:53:05 AM

Amounts Expressed in Whole Dollars	Capital Reserve (1431) (32)	Other Capital Projects Fund (39)	Debt Service (40)	Permanent (90)	Total Governmental Funds
Revenues					
6000 Revenue from Local Sources	222,658	586,513	85,616		83,838,022
7000 Revenue from State Sources					20,702,279
8000 Revenue from Federal Sources					1,565,613
Total Revenues	\$222,658	\$586,513	\$85,616		\$106,105,914
Expenditures					
1000 Instruction					57,653,801
2000 Support Services	1,965,652				35,897,123
3000 Operation of Non-Instructional Services					1,528,028
4000 Facilities Acquisition, Construction and Improvement Services	1,950,295	17,592,952			19,564,115
5110 Debt Service					5,899,948
5130 Refund of Prior Year Revenues / Receipts					405,131
Total Expenditures	\$3,915,947	\$17,592,952			\$120,948,146
Excess (Deficiency) Of Revenues Over Expenditures	(\$3,693,289)	(\$17,006,439)	\$85,616		(\$14,842,232)
Other Financing Sources (Uses)					
9110 Face Value of Bonds Issued		9,620,000			9,620,000
9120 Proceeds from Refunding of Bonds					
9130 Bond Premiums		283,875			283,875
9200 Proceeds from Extended-Term Financing					
9300 Interfund Transfers - IN	2,300,000		2,600,000		4,900,000
9400 Sale of or Compensation for Loss of Fixed Assets					900
9710 Transfers from Component Units					
9720 Transfers from Primary Governments					
9910 Other Financing Sources Not Listed in the 9000 Series					
9990 Insurance Recoveries					
5120 Debt Service – Refunded Bonds					
5150 Bond Discounts					
5200 Interfund Transfers – Out					4,900,000
5300 Transfers Out to Component Units/Primary Governments					
Total Other Financing Sources (Uses)	\$2,300,000	\$9,903,875	\$2,600,000		\$9,904,775

Amounts Expressed in Whole Dollars		<u>General Fund</u> <u>(10)</u>	<u>Public Purpose Trust</u> <u>(27)</u>	<u>Other Compt Approved</u> <u>(28)</u>	<u>Athletic / Activity</u> <u>(29)</u>	<u>Capital Reserve</u> <u>(690.</u> <u>1850)</u> <u>(31)</u>
Special And Extraordinary Items						
9920	Special Items – Gains					
9930	Extraordinary Items – Gains					
5520	Special Items – Losses					
5530	Extraordinary Items – Losses					
Net Change In Fund Balances		\$872,780				
Fund Balance						
0001	Fund Balance - Beginning of Fiscal Year	19,358,221				
Fund Balance - End Of Year		\$20,231,001				

Amounts Expressed in Whole Dollars		<u>Capital Reserve (1431</u> <u>(32)</u>	<u>Other Capital Projects</u> <u>Fund</u> <u>(39)</u>	<u>Debt Service</u> <u>(40)</u>	<u>Permanent</u> <u>(90)</u>	<u>Total Governmental</u> <u>Funds</u>
Special And Extraordinary Items						
9920 Special Items – Gains						
9930 Extraordinary Items – Gains						
5520 Special Items – Losses						
5530 Extraordinary Items – Losses						
Net Change In Fund Balances		(\$1,393,289)	(\$7,102,564)	\$2,685,616		(\$4,937,457)
Fund Balance						
0001 Fund Balance - Beginning of Fiscal Year		15,266,616	26,192,102	6,429,296		67,246,235
Fund Balance - End Of Year		\$13,873,327	\$19,089,538	\$9,114,912		\$62,308,778

LEA : 123463603 Hatboro-Horsham SD

Printed 1/2/2020 9:53:07 AM

Amounts Expressed in Whole Dollars		<u>Food Service</u> <u>(51)</u>	<u>Child Care</u> <u>Operations</u> <u>(52)</u>	<u>Other Enterprise</u> <u>(58)</u>	<u>TOTAL</u>	<u>Internal Service</u> <u>(60)</u>
Assets And Deferred Outflows Of Resources						
Current Assets						
0100	Cash and Cash Equivalents	1,009,495	620,437		1,629,932	
0110	Investments					
0130	Due From Other Funds	29,923	43,936		73,859	
0141	Due From Other Governments	34,354	16,962		51,316	
0142	State Revenue Receivable					
0143	Federal Revenue Receivable					
0146	Due from Primary Government					
0147	Due from Component Unit					
0150	Other Receivables					
0170	Inventories	49,657			49,657	
0180	Prepaid Expenses (Expenditures)					
0190	Other Current Assets		35,044		35,044	
Total Current Assets		\$1,123,429	\$716,379		\$1,839,808	
Noncurrent Assets						
0211	Land					
0212	Site Improvements (Net)					
0220	Buildings and Building Improvements (Net)					
0230	Machinery, Equipment and Furniture (Net)	49,825			49,825	
0250	Construction in Progress					
0260	Long Term Prepayments					
0290	Other Noncurrent Assets					
Total Noncurrent Assets		\$49,825			\$49,825	
0910	Deferred Outflows of Resources	418,000	355,000		773,000	
Total Assets And Deferred Outflows Of Resources		\$1,591,254	\$1,071,379		\$2,662,633	

Amounts Expressed in Whole Dollars	Food Service (51)	Child Care Operations (52)	Other Enterprise (58)	TOTAL	Internal Service (60)
Liabilities And Deferred Inflows Of Resources And Net Position					
Current Liabilities					
0400 Due to Other Funds	59,846	94,458		154,304	
0411 Due to Other Governments					
0413 Due to Component Unit					
0420 Accounts Payable		23,191		23,191	
0430 Contracts Payable	33,556			33,556	
0440 Current Portion of Long-Term Debt					
0450 Short-Term Payables					
0461 Accrued Salaries and Benefits		122,949		122,949	
0462 Payroll Deductions and Withholding					
0480 Unearned Revenues	56,839	150,419		207,258	
0490 Other Current Liabilities					
Total Current Liabilities	\$150,241	\$391,017		\$541,258	
Noncurrent Liabilities					
0510 Bonds Payable					
0520 Extended-Term Financing Agreements Payable					
0530 Lease-Purchase Obligations					
0540 Accumulated Compensated Absences	82,900	16,450		99,350	
0550 Authority Lease Obligations					
0560 Other Post-Employment Benefits (OPEB)	197,000	250,900		447,900	
0570 Net Pension Liability	2,856,000	2,394,000		5,250,000	
0599 Other Noncurrent Liabilities					
Total Noncurrent Liabilities	\$3,135,900	\$2,661,350		\$5,797,250	
Total Liabilities	\$3,286,141	\$3,052,367		\$6,338,508	
0950 Deferred Inflows of Resources	78,000	95,000		173,000	
Net Position					
0791 Net Investment in Capital Assets	49,825			49,825	
0008 Restricted Net Position (0792 – 0798)	(1,822,712)			(1,822,712)	
0799 Unrestricted Net Position		(2,075,988)		(2,075,988)	
Total Net Position	(\$1,772,887)	(\$2,075,988)		(\$3,848,875)	
Total Liabilities And Deferred Inflows Of Resources And Net Position	\$1,591,254	\$1,071,379		\$2,662,633	

Amounts Expressed in Whole Dollars		<u>Food Service</u> <u>(51)</u>	<u>Child Care Operations</u> <u>(52)</u>	<u>Other Enterprise</u> <u>(58)</u>	<u>TOTAL</u>	<u>Internal Service</u> <u>(60)</u>
Operating Revenues						
6600	Food Service Revenue	1,291,747			1,291,747	
0071	Charges for Services		2,126,392		2,126,392	
0072	Other Operating Revenue					
Total Operating Revenues		\$1,291,747	\$2,126,392		\$3,418,139	
Operating Expenses						
100	Personnel Services – Salaries	652,211	1,320,583		1,972,794	
200	Personnel Services – Employee Benefits	535,931	482,079		1,018,010	
300	Purchased Professional and Technical Services	21,112			21,112	
400	Purchased Property Services	15,524			15,524	
500	Other Purchased Services	872,638	35,520		908,158	
600	Supplies		161,706		161,706	
740	Depreciation					
810	Dues and Fees					
890	Miscellaneous Expenditures		569,078		569,078	
Total Operating Expenses		\$2,097,416	\$2,568,966		\$4,666,382	
Operating Income (Loss)		(\$805,669)	(\$442,574)		(\$1,248,243)	
Non Operating Revenues (Expenses)						
6500	Earnings on Investments	7,098	6,229		13,327	
6920	Contributions and Donations from Private Sources		48,537		48,537	
6930	Gains or Losses on Sale of Fixed Assets					
6991	Refunds of a Prior Year Expenditure					
7000	Revenue from State Sources	51,235	12,692		63,927	
8000	Revenue from Federal Sources	841,891			841,891	
9990	Insurance Recoveries					
820	Claims and Judgments Against the LEA					
830	Interest					
TOTAL Non Operating Revenues (Expenses)		\$900,224	\$67,458		\$967,682	
Income (Loss) Before Contributions And Transfers		\$94,555	(\$375,116)		(\$280,561)	

Amounts Expressed in Whole Dollars	<u>Food Service</u> <u>(51)</u>	<u>Child Care Operations</u> <u>(52)</u>	<u>Other Enterprise</u> <u>(58)</u>	<u>TOTAL</u>	<u>Internal Service</u> <u>(60)</u>
Contributions, Transfers, and Special and Extraordinary Items					
5200 Interfund Transfers – Out					
5300 Transfers Out to Component Units/Primary Governments					
5520 Special Items – Losses					
5530 Extraordinary Items – Losses					
9300 Interfund Transfers - IN					
9500 Capital Contributions					
9700 Transfers IN From Component Units/Primary Governments					
9920 Special Items – Gains					
9930 Extraordinary Items – Gains					
Change In Net Position	\$94,555	(\$375,116)		(\$280,561)	
0002 Net Position - Beginning of Fiscal Year	(1,867,442)	(1,700,872)		(3,568,314)	
0003 Accounting Changes / Residual Equity Transfers					
Net Position - End Of Year	(\$1,772,887)	(\$2,075,988)		(\$3,848,875)	

LEA : 123463603 Hatboro-Horsham SD

Printed 1/2/2020 9:53:29 AM

Amounts Expressed in Whole Dollars		<u>Food Service</u> <u>(51)</u>	<u>Child Care Operations</u> <u>(52)</u>	<u>Other Enterprise</u> <u>(58)</u>	<u>TOTAL</u>	<u>Internal Service(60)</u>
Cash Flows From Operating Activities						
0011	Cash Receipts From Users	1,283,731	2,068,372		3,352,103	
0012	Cash Receipts From Assessments Made to Other Funds					
0013	Cash Receipts From Earnings on Investments					
0014	Cash Receipts From Other Operating Revenue					
0015	Cash Payments To Employees For Services	1,182,192	1,782,312		2,964,504	
0016	Cash Payments For Insurance Claims					
0017	Cash Payments To Suppliers For Goods and Services	888,911	718,164		1,607,075	
0018	Cash Payments For Other Operating Expenses					
Net Cash Provided By (Used For) Operating Activities		(\$787,372)	(\$432,104)		(\$1,219,476)	
Cash Flows From Non-Capital Financing Activities						
0021	Receipts From Local Sources - 6000		48,537		48,537	
0022	Receipts From State Sources - 7000	51,235	12,692		63,927	
0023	Receipts From Federal Sources -8000	841,891			841,891	
0024	Notes and Loans Received (Repaid)					
0025	Interest Paid on Notes/Loans - 5100-830					
0026	Operating Transfers In (Out)/Residual Equity Trans					
0027	Operating Transfers In (Out) Primary Government / Comp Unit					
0028	Receipts From Refund of Prior Year Expenditures - 6991					
0029	Special and Extraordinary Gains (losses)					
0030	Receipts from Insurance Recoveries -9990					
Net Cash Prov By (Used for) Non-Capital Financing Activities		\$893,126	\$61,229		\$954,355	
Cash Flows From Capital and Related Financing Activities						
0031	Payments For Fac Acq, Const, and Imp - 4000					
0032	Gain / (Loss) on Sale of Fixed Assets - 6930					
0033	Proceeds From Extended Term Financing - 9200					
0034	Principal Paid on Financing Agreements					
0035	Interest Paid on Financing Agreements - 5100-830					
0036	(Inc) Dec in Contributed Capital					
Net Cash Prov By (Used for) Capital and Related Financing Activities						
Cash Flows From Investing Activities						
0041	Earnings on Investments - 6500	7,098	6,229		13,327	
0042	Purchase of Inv Securities / Deposits to Inv Pools					
0043	Receipts From Investment Pool Withdrawals					
0044	Proceeds from Sale and Maturity of Inv Securities					

LEA : 123463603 Hatboro-Horsham SD

Printed 1/2/2020 9:53:29 AM

0045 Loans Received (Paid)

Net Cash Prov By (Used for) Investing Activities	\$7,098	\$6,229	\$13,327
--	---------	---------	----------

LEA : 123463603 Hatboro-Horsham SD

Printed 1/2/2020 9:53:29 AM

	Food Service (51)	Child Care Operations (52)	Other Enterprise (58)	TOTAL	Internal Service (60)
Net Increase (Decrease) in Cash Flows	112,852	(364,646)		(251,794)	
0004 Cash and Cash Equivalents Beginning of Year	896,643	985,083		1,881,726	
Cash and Cash Equivalents at Year End	\$1,009,495	\$620,437		\$1,629,932	
Reconciliation of Operating Income (Loss) To Net Cash Provided by (Used For) Operating Activities					
0005 Operating Income (Loss) per REP	(805,669)	(442,574)		(1,248,243)	
Adjustments					
0051 Depreciation and Net Amortization	15,524			15,524	
0052 Provision for Uncollectible Accounts					
0053 Other Adjustments					
Effect of Changes in Assets, Liabilities, Deferred Outflows and Deferred Inflows					
0054 (Inc) Dec In Accounts Receivable (0120-0150)	(1,418)	17,762		16,344	
0055 Advances to Other Funds (0160)		5,536		5,536	
0056 (Inc) Dec in Inventories (0170)	2,908			2,908	
0057 (Inc) Dec in Prepaid Expenses (0180)					
0058 (Inc) Dec in Other Current or Noncurrent Assets	(1,455)	33,716		32,261	
0064 Deferred Outflows (0910)					
0059 Inc (Dec) in Accounts Payable (0400-0450)	476	8,888		9,364	
0060 Inc (Dec) in Accrued Salaries/Benefits (0461)	(22,050)	(2,757)		(24,807)	
0065 Inc (Dec) in Net Pension Liabilities (0570)	28,000	19,600		47,600	
0066 Inc (Dec) in Other Postemp Benefit Oblig (0560)					
0061 Inc (Dec) in Payroll Deductions/Withholding (0462)					
0062 Inc (Dec) in Unearned Revenue (0480)		(72,275)		(72,275)	
0063 Inc (Dec) in Other Current or Noncurrent Liabilities	(3,688)			(3,688)	
0067 Deferred Inflows (0950)					
Total Adjustments	\$18,297	\$10,470		\$28,767	
Cash Provided By (Used for) Total	(\$787,372)	(\$432,104)		(\$1,219,476)	

COMBINED STATEMENT OF CASH FLOWS
SCHEDULE OF NONCASH INVESTING, CAPITAL, AND FINANCING ACTIVITIES

Explanation of Transaction and Balance Sheet Effect	Amount
Total	

LEA : 123463603 Hatboro-Horsham SD

Printed 1/2/2020 9:53:32 AM

Amounts Expressed in Whole Dollars	<u>Private Purpose Trust</u> <u>(71)</u>	<u>Investment Trust</u> <u>(72)</u>	<u>Pension Trust</u> <u>(73)</u>	<u>Activity</u> <u>(81)</u>
Assets And Deferred Outflows Of Resources				
Assets				
0100 Cash and Cash Equivalents	506,887			
0110 Investments				
0130 Due From Other Funds	3,804,983			
0147 Due from Component Unit				
0150 Other Receivables				
0170 Inventories				
0180 Prepaid Expenses (Expenditures)				
0190 Other Current Assets				
0220 Buildings and Building Improvements (Net)				
0230 Machinery, Equipment and Furniture (Net)				
Total Assets	\$4,311,870			
0910 Deferred Outflows of Resources				
Total Assets And Deferred Outflows Of Resources	\$4,311,870			

LEA : 123463603 Hatboro-Horsham SD

Printed 1/2/2020 9:53:32 AM

Amounts Expressed in Whole Dollars		<u>Other Agency</u> <u>(89)</u>	<u>Discrete Component Units</u> <u>(98)</u>	<u>Discrete Component Units</u> <u>(99)</u>	<u>Total Fiduciary Funds</u>
Assets And Deferred Outflows Of Resources					
Assets					
0100	Cash and Cash Equivalents	125,193			632,080
0110	Investments	347,511			347,511
0130	Due From Other Funds				3,804,983
0147	Due from Component Unit				
0150	Other Receivables				
0170	Inventories				
0180	Prepaid Expenses (Expenditures)				
0190	Other Current Assets				
0220	Buildings and Building Improvements (Net)				
0230	Machinery, Equipment and Furniture (Net)				
Total Assets		\$472,704			\$4,784,574
0910	Deferred Outflows of Resources				
Total Assets And Deferred Outflows Of Resources		\$472,704			\$4,784,574

LEA : 123463603 Hatboro-Horsham SD

Printed 1/2/2020 9:53:32 AM

Amounts Expressed in Whole Dollars	<u>Private Purpose Trust</u> <u>(71)</u>	<u>Investment Trust</u> <u>(72)</u>	<u>Pension Trust</u> <u>(73)</u>	<u>Activity</u> <u>(81)</u>
Liabilities, Deferred Inflows Of Resources And Net Position				
Liabilities				
0400 Due to Other Funds				
0411 Due to Other Governments	141,543			
0412 Due to Primary Government				
0413 Due to Component Unit				
0420 Accounts Payable	47,752			
0430 Contracts Payable				
0450 Short-Term Payables				
0461 Accrued Salaries and Benefits				
0462 Payroll Deductions and Withholding	157,524			
0480 Unearned Revenues				
0490 Other Current Liabilities	3,805,770			
Total Liabilities	\$4,152,589			
0950 Deferred Inflows of Resources				
Net Position				
0791 Net Investment in Capital Assets				
0009 Restricted Net Position (0792 – 0798)				
0799 Unrestricted Net Position	159,281			
Total Net Position	\$159,281			
Total Liabilities, Deferred Inflows Of Resources And Net Position	\$4,311,870			

LEA : 123463603 Hatboro-Horsham SD

Printed 1/2/2020 9:53:32 AM

Amounts Expressed in Whole Dollars		<u>Other Agency</u> <u>(89)</u>	<u>Discrete Component Units</u> <u>(98)</u>	<u>Discrete Component Units</u> <u>(99)</u>	<u>Total Fiduciary Funds</u>
Liabilities, Deferred Inflows Of Resources And Net Position					
Liabilities					
0400	Due to Other Funds				
0411	Due to Other Governments				141,543
0412	Due to Primary Government				
0413	Due to Component Unit				
0420	Accounts Payable	8,666			56,418
0430	Contracts Payable				
0450	Short-Term Payables				
0461	Accrued Salaries and Benefits				
0462	Payroll Deductions and Withholding				157,524
0480	Unearned Revenues				
0490	Other Current Liabilities	464,038			4,269,808
Total Liabilities		\$472,704			\$4,625,293
0950	Deferred Inflows of Resources				
Net Position					
0791	Net Investment in Capital Assets				
0009	Restricted Net Position (0792 – 0798)				
0799	Unrestricted Net Position				159,281
Total Net Position					\$159,281
Total Liabilities, Deferred Inflows Of Resources And Net Position		\$472,704			\$4,784,574

LEA : 123463603 Hatboro-Horsham SD

Printed 1/2/2020 9:53:35 AM

Amounts Expressed in Whole Dollars	<u>Private Purpose Trust</u> <u>(71)</u>	<u>Investment Trust</u> <u>(72)</u>	<u>Pension Trust</u> <u>(73)</u>	<u>Discrete Component</u> <u>Units</u> <u>(98)</u>	<u>Discrete Component</u> <u>Units</u> <u>(99)</u>	<u>Total Fiduciary</u> <u>Funds</u>
Additions						
0091 Gifts and Contributions	9,641					9,641
0092 Other Additions						
Deductions						
0093 Scholarships Awarded	21,120					21,120
0094 Other Deductions						
Change In Net Position	(\$11,479)					(\$11,479)
0006 Net Position – Beginning of Fiscal Year	170,760					170,760
0007 Net Position Held in Trust for Pension Benefits						
Net Position - End of Fiscal Year	\$159,281					\$159,281

LEA : 123463603 Hatboro-Horsham SD

General Fund (10)

Printed 1/2/2020 9:53:39 AM

Page - 1 of 4

	Revenue Reported In Current Year	Current Year Tax Accrual	Prior Year Tax Accrual	Taxes Collected In Current Year
Revenue from Local Sources				
6111 Current Real Estate Taxes	70,940,141.27			70,940,141.27
6112 Interim Real Estate Taxes	582,135.94			582,135.94
6113 Public Utility Realty Taxes	78,004.89			78,004.89
6114 Payments in Lieu of Current Taxes - State / Local	2,156.00			2,156.00
6151 Current Act 511 Earned Income Taxes	6,098,271.15			6,098,271.15
6153 Current Act 511 Real Estate Transfer Taxes	956,135.42			956,135.42
6411 Delinquent Real Estate Taxes	1,325,311.31			1,325,311.31
6500 Earnings on Investments	1,154,600.12			
6700 Revenues from LEA Activities	33,430.00			
6832 Federal IDEA Revenue Received as Pass Through	926,884.43			
6910 Rentals	495,957.50			
6920 Contributions and Donations from Private Sources	15,479.51			
6944 Receipts from Other LEAs in Pennsylvania - Education	221,483.75			
6949 Other Tuition from Patrons	48,785.00			
6991 Refunds of a Prior Year Expenditure	14,980.90			
6999 Other Revenues Not Specified Above	49,477.92			
TOTAL Revenue from Local Sources	\$82,943,235.11			\$79,982,155.98

	Revenue Reported In Current Year			
Revenue from State Sources				
7110 Basic Education Funding	5,019,717.24			
7160 Tuition for Orphans Subsidy	83,154.59			
7271 Special Education funds for School-Aged Pupils	2,461,877.33			
7311 Pupil Transportation Subsidy	445,148.17			
7312 Nonpublic and Charter School Pupil Transportation Subsidy	227,150.00			
7320 Rental and Sinking Fund Payments / Building Reimbursement Subsidy	51,728.47			
7330 Health Services (Medical, Dental, Nurse, Act 25)	92,254.08			
7340 State Property Tax Reduction Allocation	2,430,216.29			
7361 School Safety and Security Grants	30,166.19			
7501 PA Accountability Grants	168,357.00			
7505 Ready to Learn Block Grant	101,873.00			
7810 State Share of Social Security and Medicare Taxes	1,719,618.81			
7820 State Share of Retirement Contributions	7,871,017.63			
TOTAL Revenue from State Sources	\$20,702,278.80			

Revenue Reported In Current Year				
Revenue from Federal Sources				
8110	Payments for Federally Impacted Areas	648,508.56		
8320	Energy Conservation Grants - TA and ECM	4,511.00		
8514	NCLB, Title I - Improving the Academic Achievement of the Disadvantaged	393,525.13		
8515	NCLB, Title II - Preparing, Training and Recruiting High Quality Teachers and Principals	104,607.62		
8516	NCLB, Title III - Language Instruction for Limited English Proficient and Immigrant Students	29,444.89		
8517	NCLB, Title IV - 21st Century Schools	15,982.71		
8810	School-Based Access Medicaid Reimbursement Program (SBAP) Reimbursements (Access)	360,508.19		
8820	Medical Assistance Reimbursement for Administrative Claiming (Quarterly) Program	8,524.97		
TOTAL Revenue from Federal Sources		\$1,565,613.07		

	Revenue Reported In Current Year			
<u>Other Financing Sources</u>				
9400 Sale of or Compensation for Loss of Fixed Assets	900.00			
TOTAL Other Financing Sources	\$900.00			
TOTAL FROM ALL SOURCES	\$105,212,026.98			\$79,982,155.98

Revenue from Local Sources	82,943,235.11
Revenue from State Sources	20,702,278.80
Revenue from Federal Sources	1,565,613.07
Other Financing Sources	900.00
TOTAL FROM ALL SOURCES	\$105,212,026.98

LEA : 123463603 Hatboro-Horsham SD

Printed 1/2/2020 9:53:44 AM

General Fund (10)

		<u>Total</u>
1000 Instruction		
100 <u>Personnel Services – Salaries</u>		
100 Personnel Services – Salaries		30,495,341.33
Total Personnel Services – Salaries		\$30,495,341.33
200 <u>Personnel Services – Employee Benefits</u>		
210 Group Insurance – Contracted Provider		189,656.51
220 Social Security Contributions		2,227,835.92
230 PSERS Retirement Contributions		10,156,353.26
250 Unemployment Compensation		9,440.65
260 Workers' Compensation		225,819.31
270 Group Insurance – Self-Insurance		4,787,420.70
299 All Other Employee Benefits		322,446.47
Total Personnel Services – Employee Benefits		\$17,918,972.82
300 <u>Purchased Professional and Technical Services</u>		
322 Professional Educational Services – Ius		828,804.92
323 Professional Educational Services – Other Educational Agencies		403,078.66
329 Professional Educational Services – Other		3,201,184.31
330 Other Professional Services		21,095.15
Total Purchased Professional and Technical Services		\$4,454,163.04
400 <u>Purchased Property Services</u>		
430 Repairs and Maintenance Services		219,063.32
440 Rentals		145,680.94
Total Purchased Property Services		\$364,744.26
500 <u>Other Purchased Services</u>		
530 Communications		995.06
549 Other Advertising/Public Relations		565.13
550 Printing and Binding		5,203.94
561 Tuition To Other School Districts Within the State		34,940.63
562 Tuition To Pennsylvania Charter Schools		738,299.46
563 Tuition To Nonpublic Schools		1,438,150.61
564 Tuition To Career and Technology Centers		1,164,741.00
567 Tuition To Approved Private Schools (APS) and PA Chartered Schools for the Deaf and Blind		270,294.46
568 Tuition To Private Residential Rehabilitative Institutions (PRRI) [In-State] and Detention Centers		14,876.13
569 Tuition – Other		120,720.17
580 Travel		2,457.81
594 IU Payment By Withholding for Institutionalized Children's Programs – Special Classes		3,063.70
Total Other Purchased Services		\$3,794,308.10
600 <u>Supplies</u>		
610 General Supplies		463,423.02
630 Food		9,427.55
640 Books and Periodicals		45,953.41
650 Supplies & Fees – Technology Related		58,319.95
Total Supplies		\$577,123.93

LEA : 123463603 Hatboro-Horsham SD

Printed 1/2/2020 9:53:44 AM

General Fund (10)		
1000 Instruction		<u>Total</u>
800 <u>Other Objects</u>		
810 Dues and Fees		49,147.86
Total Other Objects		\$49,147.86
Total 1000 Instruction		\$57,653,801.34

LEA : 123463603 Hatboro-Horsham SD

Printed 1/2/2020 9:53:44 AM

General Fund (10)

1100 Regular Programs – Elementary / Secondary	Elementary	Secondary	Federal	Total
100 <u>Personnel Services – Salaries</u>				
100 Personnel Services – Salaries	11,862,849.31	11,844,729.39	183,426.20	23,891,004.90
Total Personnel Services – Salaries	\$11,862,849.31	\$11,844,729.39	\$183,426.20	\$23,891,004.90
200 <u>Personnel Services – Employee Benefits</u>				
210 Group Insurance – Contracted Provider	98,621.53	91,034.98		189,656.51
220 Social Security Contributions	903,081.26	833,613.48	14,184.89	1,750,879.63
230 PSERS Retirement Contributions	4,121,228.10	3,804,210.56	33,984.35	7,959,423.01
250 Unemployment Compensation	4,909.14	4,531.51		9,440.65
260 Workers' Compensation	117,426.04	108,393.27		225,819.31
270 Group Insurance – Self-Insurance	1,123,734.84	1,037,293.70	706,081.73	2,867,110.27
299 All Other Employee Benefits	167,672.16	154,774.31		322,446.47
Total Personnel Services – Employee Benefits	\$6,536,673.07	\$6,033,851.81	\$754,250.97	\$13,324,775.85
300 <u>Purchased Professional and Technical Services</u>				
329 Professional Educational Services – Other	457,046.76	572,294.44	127,725.01	1,157,066.21
330 Other Professional Services		795.00	1,400.15	2,195.15
Total Purchased Professional and Technical Services	\$457,046.76	\$573,089.44	\$129,125.16	\$1,159,261.36
400 <u>Purchased Property Services</u>				
430 Repairs and Maintenance Services	36,718.61	180,759.72		217,478.33
440 Rentals	59,739.00	85,941.94		145,680.94
Total Purchased Property Services	\$96,457.61	\$266,701.66		\$363,159.27
500 <u>Other Purchased Services</u>				
530 Communications	747.46	247.60		995.06
550 Printing and Binding	2,478.94	2,108.00		4,586.94
561 Tuition To Other School Districts Within the State	20,749.37	14,191.26		34,940.63
562 Tuition To Pennsylvania Charter Schools	184,434.93	170,247.62		354,682.55
569 Tuition – Other	56.57	11,387.18		11,443.75
580 Travel	1,047.04	135.77		1,182.81
Total Other Purchased Services	\$209,514.31	\$198,317.43		\$407,831.74
600 <u>Supplies</u>				
610 General Supplies	147,678.73	199,421.75	37,968.06	385,068.54
630 Food	2,312.48	6,347.39		8,659.87
640 Books and Periodicals	12,672.24	11,771.23		24,443.47
650 Supplies & Fees – Technology Related	17,150.98	25,691.89		42,842.87
Total Supplies	\$179,814.43	\$243,232.26	\$37,968.06	\$461,014.75
800 <u>Other Objects</u>				
810 Dues and Fees	32,404.57	16,328.29		48,732.86
Total Other Objects	\$32,404.57	\$16,328.29		\$48,732.86
Total 1100 Regular Programs – Elementary / Secondary	\$19,374,760.06	\$19,176,250.28	\$1,104,770.39	\$39,655,780.73

LEA : 123463603 Hatboro-Horsham SD

Printed 1/2/2020 9:53:44 AM

General Fund (10)

1110 Regular Programs

	Elementary	Secondary	Federal	Total
100 <u>Personnel Services – Salaries</u>				
100 Personnel Services – Salaries	11,862,849.31	11,844,729.39		23,707,578.70
Total Personnel Services – Salaries	\$11,862,849.31	\$11,844,729.39		\$23,707,578.70
200 <u>Personnel Services – Employee Benefits</u>				
210 Group Insurance – Contracted Provider	98,621.53	91,034.98		189,656.51
220 Social Security Contributions	903,081.26	833,613.48		1,736,694.74
230 PSERS Retirement Contributions	4,121,228.10	3,804,210.56		7,925,438.66
250 Unemployment Compensation	4,909.14	4,531.51		9,440.65
260 Workers' Compensation	117,426.04	108,393.27		225,819.31
270 Group Insurance – Self-Insurance	1,123,734.84	1,037,293.70	648,508.56	2,809,537.10
299 All Other Employee Benefits	167,672.16	154,774.31		322,446.47
Total Personnel Services – Employee Benefits	\$6,536,673.07	\$6,033,851.81	\$648,508.56	\$13,219,033.44
300 <u>Purchased Professional and Technical Services</u>				
329 Professional Educational Services – Other	457,046.76	572,294.44		1,029,341.20
330 Other Professional Services		795.00		795.00
Total Purchased Professional and Technical Services	\$457,046.76	\$573,089.44		\$1,030,136.20
400 <u>Purchased Property Services</u>				
430 Repairs and Maintenance Services	36,718.61	180,759.72		217,478.33
440 Rentals	59,739.00	85,941.94		145,680.94
Total Purchased Property Services	\$96,457.61	\$266,701.66		\$363,159.27
500 <u>Other Purchased Services</u>				
530 Communications	747.46	247.60		995.06
550 Printing and Binding	2,478.94	2,108.00		4,586.94
561 Tuition To Other School Districts Within the State	20,749.37	14,191.26		34,940.63
562 Tuition To Pennsylvania Charter Schools	184,434.93	170,247.62		354,682.55
569 Tuition – Other	56.57	11,387.18		11,443.75
580 Travel	1,047.04	135.77		1,182.81
Total Other Purchased Services	\$209,514.31	\$198,317.43		\$407,831.74
600 <u>Supplies</u>				
610 General Supplies	147,678.73	199,421.75		347,100.48
630 Food	2,312.48	6,347.39		8,659.87
640 Books and Periodicals	12,672.24	11,771.23		24,443.47
650 Supplies & Fees – Technology Related	17,150.98	25,691.89		42,842.87
Total Supplies	\$179,814.43	\$243,232.26		\$423,046.69
800 <u>Other Objects</u>				
810 Dues and Fees	32,404.57	16,328.29		48,732.86
Total Other Objects	\$32,404.57	\$16,328.29		\$48,732.86
Total 1110 Regular Programs	\$19,374,760.06	\$19,176,250.28	\$648,508.56	\$39,199,518.90

LEA : 123463603 Hatboro-Horsham SD

Printed 1/2/2020 9:53:44 AM

General Fund (10)

1190 Federally-Funded Regular Programs	<u>Elementary</u>	<u>Secondary</u>	<u>Federal</u>	<u>Total</u>
100 <u>Personnel Services – Salaries</u>				
100 Personnel Services – Salaries			183,426.20	183,426.20
Total Personnel Services – Salaries			\$183,426.20	\$183,426.20
200 <u>Personnel Services – Employee Benefits</u>				
220 Social Security Contributions			14,184.89	14,184.89
230 PSERS Retirement Contributions			33,984.35	33,984.35
270 Group Insurance – Self-Insurance			57,573.17	57,573.17
Total Personnel Services – Employee Benefits			\$105,742.41	\$105,742.41
300 <u>Purchased Professional and Technical Services</u>				
329 Professional Educational Services – Other			127,725.01	127,725.01
330 Other Professional Services			1,400.15	1,400.15
Total Purchased Professional and Technical Services			\$129,125.16	\$129,125.16
600 <u>Supplies</u>				
610 General Supplies			37,968.06	37,968.06
Total Supplies			\$37,968.06	\$37,968.06
Total 1190 Federally-Funded Regular Programs			\$456,261.83	\$456,261.83

LEA : 123463603 Hatboro-Horsham SD

Printed 1/2/2020 9:53:44 AM

General Fund (10)				
1200 Special Programs – Elementary / Secondary	<u>Elementary</u>	<u>Secondary</u>	<u>Federal</u>	<u>Total</u>
100 <u>Personnel Services – Salaries</u>				
100 Personnel Services – Salaries	2,600,479.10	2,709,420.76	475,095.52	5,784,995.38
Total Personnel Services – Salaries	\$2,600,479.10	\$2,709,420.76	\$475,095.52	\$5,784,995.38
200 <u>Personnel Services – Employee Benefits</u>				
220 Social Security Contributions	194,757.68	189,609.71	33,176.17	417,543.56
230 PSERS Retirement Contributions	939,698.82	912,736.39	74,273.13	1,926,708.34
270 Group Insurance – Self-Insurance	840,782.12	793,959.18	130,477.82	1,765,219.12
Total Personnel Services – Employee Benefits	\$1,975,238.62	\$1,896,305.28	\$237,927.12	\$4,109,471.02
300 <u>Purchased Professional and Technical Services</u>				
322 Professional Educational Services – Ius	362,089.79	446,564.25	17,753.00	826,407.04
323 Professional Educational Services – Other Educational Agencies	134,990.98	117,761.43	142,826.25	395,578.66
329 Professional Educational Services – Other	1,503,877.82	486,940.26	2,700.80	1,993,518.88
330 Other Professional Services			18,900.00	18,900.00
Total Purchased Professional and Technical Services	\$2,000,958.59	\$1,051,265.94	\$182,180.05	\$3,234,404.58
500 <u>Other Purchased Services</u>				
549 Other Advertising/Public Relations	293.87	271.26		565.13
550 Printing and Binding	320.84	296.16		617.00
562 Tuition To Pennsylvania Charter Schools	199,480.79	184,136.12		383,616.91
563 Tuition To Nonpublic Schools	734,559.54	582,416.52		1,316,976.06
567 Tuition To Approved Private Schools (APS) and PA Chartered Schools for the Deaf and Blind	151,321.51	118,972.95		270,294.46
568 Tuition To Private Residential Rehabilitative Institutions (PRRI) [In-State] and Detention Centers		14,876.13		14,876.13
569 Tuition – Other	31,970.36	77,306.06		109,276.42
580 Travel			1,275.00	1,275.00
594 IU Payment By Withholding for Institutionalized Children's Programs – Special Classes	1,593.12	1,470.58		3,063.70
Total Other Purchased Services	\$1,119,540.03	\$979,745.78	\$1,275.00	\$2,100,560.81
600 <u>Supplies</u>				
610 General Supplies	24,067.50	18,383.44	6,821.18	49,272.12
630 Food		392.20		392.20
640 Books and Periodicals	2,000.00	1,223.62	17,750.97	20,974.59
650 Supplies & Fees – Technology Related	1,505.40	1,587.09	5,834.59	8,927.08
Total Supplies	\$27,572.90	\$21,586.35	\$30,406.74	\$79,565.99
800 <u>Other Objects</u>				
810 Dues and Fees		415.00		415.00
Total Other Objects		\$415.00		\$415.00
Total 1200 Special Programs – Elementary / Secondary	\$7,723,789.24	\$6,658,739.11	\$926,884.43	\$15,309,412.78

LEA : 123463603 Hatboro-Horsham SD

Printed 1/2/2020 9:53:44 AM

General Fund (10)				
1210 Life Skills Support	<u>Elementary</u>	<u>Secondary</u>	<u>Federal</u>	<u>Total</u>
100 <u>Personnel Services – Salaries</u>				
100 Personnel Services – Salaries	153,231.56	287,860.45	59,967.02	501,059.03
Total Personnel Services – Salaries	\$153,231.56	\$287,860.45	\$59,967.02	\$501,059.03
200 <u>Personnel Services – Employee Benefits</u>				
220 Social Security Contributions	16,628.03	15,348.96	4,365.45	36,342.44
230 PSERS Retirement Contributions	81,789.56	75,690.80	10,023.52	167,503.88
270 Group Insurance – Self-Insurance	67,003.57	61,849.45	17,027.16	145,880.18
Total Personnel Services – Employee Benefits	\$165,421.16	\$152,889.21	\$31,416.13	\$349,726.50
300 <u>Purchased Professional and Technical Services</u>				
323 Professional Educational Services – Other Educational Agencies		22,596.50		22,596.50
329 Professional Educational Services – Other	40,592.93	28,819.53	640.00	70,052.46
Total Purchased Professional and Technical Services	\$40,592.93	\$51,416.03	\$640.00	\$92,648.96
500 <u>Other Purchased Services</u>				
563 Tuition To Nonpublic Schools	97,100.00			97,100.00
567 Tuition To Approved Private Schools (APS) and PA Chartered Schools for the Deaf and Blind		46,860.00		46,860.00
Total Other Purchased Services	\$97,100.00	\$46,860.00		\$143,960.00
600 <u>Supplies</u>				
610 General Supplies	3,176.26	5,085.21		8,261.47
640 Books and Periodicals		143.44		143.44
650 Supplies & Fees – Technology Related		197.49		197.49
Total Supplies	\$3,176.26	\$5,426.14		\$8,602.40
Total 1210 Life Skills Support	\$459,521.91	\$544,451.83	\$92,023.15	\$1,095,996.89

LEA : 123463603 Hatboro-Horsham SD

Printed 1/2/2020 9:53:44 AM

General Fund (10)				
1220 Sensory Support	<u>Elementary</u>	<u>Secondary</u>	<u>Federal</u>	<u>Total</u>
100 <u>Personnel Services – Salaries</u>				
100 Personnel Services – Salaries	469,591.90	64,412.02		534,003.92
Total Personnel Services – Salaries	\$469,591.90	\$64,412.02		\$534,003.92
200 <u>Personnel Services – Employee Benefits</u>				
220 Social Security Contributions	20,120.65	18,572.90		38,693.55
230 PSERS Retirement Contributions	92,829.16	85,688.45		178,517.61
270 Group Insurance – Self-Insurance	60,149.34	55,522.46		115,671.80
Total Personnel Services – Employee Benefits	\$173,099.15	\$159,783.81		\$332,882.96
300 <u>Purchased Professional and Technical Services</u>				
322 Professional Educational Services – Ius	118,489.31	98,848.21	3,553.00	220,890.52
323 Professional Educational Services – Other Educational Agencies	45,353.38	15,586.06		60,939.44
329 Professional Educational Services – Other	243,241.12			243,241.12
Total Purchased Professional and Technical Services	\$407,083.81	\$114,434.27	\$3,553.00	\$525,071.08
500 <u>Other Purchased Services</u>				
567 Tuition To Approved Private Schools (APS) and PA Chartered Schools for the Deaf and Blind	95,657.79	35,640.85		131,298.64
Total Other Purchased Services	\$95,657.79	\$35,640.85		\$131,298.64
600 <u>Supplies</u>				
610 General Supplies	1,464.82	786.07		2,250.89
Total Supplies	\$1,464.82	\$786.07		\$2,250.89
Total 1220 Sensory Support	\$1,146,897.47	\$375,057.02	\$3,553.00	\$1,525,507.49

LEA : 123463603 Hatboro-Horsham SD

Printed 1/2/2020 9:53:44 AM

General Fund (10)				
1230 Emotional Support	<u>Elementary</u>	<u>Secondary</u>	<u>Federal</u>	<u>Total</u>
100 <u>Personnel Services – Salaries</u>				
100 Personnel Services – Salaries	349,530.13	554,069.02		903,599.15
Total Personnel Services – Salaries	\$349,530.13	\$554,069.02		\$903,599.15
200 <u>Personnel Services – Employee Benefits</u>				
220 Social Security Contributions	34,180.74	31,551.45		65,732.19
230 PSERS Retirement Contributions	157,109.21	145,023.89		302,133.10
270 Group Insurance – Self-Insurance	131,195.63	121,103.67		252,299.30
Total Personnel Services – Employee Benefits	\$322,485.58	\$297,679.01		\$620,164.59
300 <u>Purchased Professional and Technical Services</u>				
322 Professional Educational Services – Ius	146,991.64	328,479.45		475,471.09
323 Professional Educational Services – Other Educational Agencies	85,111.08	78,635.92	139,301.25	303,048.25
329 Professional Educational Services – Other	556,754.03	230,441.69		787,195.72
Total Purchased Professional and Technical Services	\$788,856.75	\$637,557.06	\$139,301.25	\$1,565,715.06
500 <u>Other Purchased Services</u>				
563 Tuition To Nonpublic Schools	467,448.54	582,416.52		1,049,865.06
567 Tuition To Approved Private Schools (APS) and PA Chartered Schools for the Deaf and Blind	44,602.97	26,262.18		70,865.15
568 Tuition To Private Residential Rehabilitative Institutions (PRRI) [In-State] and Detention Centers		14,876.13		14,876.13
Total Other Purchased Services	\$512,051.51	\$623,554.83		\$1,135,606.34
600 <u>Supplies</u>				
610 General Supplies	5,219.65	2,460.89	437.48	8,118.02
640 Books and Periodicals	2,000.00			2,000.00
Total Supplies	\$7,219.65	\$2,460.89	\$437.48	\$10,118.02
Total 1230 Emotional Support	\$1,980,143.62	\$2,115,320.81	\$139,738.73	\$4,235,203.16

LEA : 123463603 Hatboro-Horsham SD

Printed 1/2/2020 9:53:44 AM

General Fund (10)

1240 Academic Support

	Elementary	Secondary	Federal	Total
100 <u>Personnel Services – Salaries</u>				
100 Personnel Services – Salaries	1,576,901.04	1,755,795.14	415,128.50	3,747,824.68
Total Personnel Services – Salaries	\$1,576,901.04	\$1,755,795.14	\$415,128.50	\$3,747,824.68
200 <u>Personnel Services – Employee Benefits</u>				
220 Social Security Contributions	120,083.65	120,679.84	28,810.72	269,574.21
230 PSERS Retirement Contributions	590,850.97	590,530.24	64,249.61	1,245,630.82
270 Group Insurance – Self-Insurance	566,731.99	540,989.80	113,450.66	1,221,172.45
Total Personnel Services – Employee Benefits	\$1,277,666.61	\$1,252,199.88	\$206,510.99	\$2,736,377.48
300 <u>Purchased Professional and Technical Services</u>				
323 Professional Educational Services – Other Educational Agencies	3,775.12	249.35		4,024.47
329 Professional Educational Services – Other	518,686.68	94,199.29	2,060.80	614,946.77
Total Purchased Professional and Technical Services	\$522,461.80	\$94,448.64	\$2,060.80	\$618,971.24
500 <u>Other Purchased Services</u>				
563 Tuition To Nonpublic Schools	170,011.00			170,011.00
580 Travel			1,275.00	1,275.00
Total Other Purchased Services	\$170,011.00		\$1,275.00	\$171,286.00
600 <u>Supplies</u>				
610 General Supplies	9,154.21	7,517.31	6,383.70	23,055.22
630 Food		392.20		392.20
640 Books and Periodicals		1,080.18	17,750.97	18,831.15
650 Supplies & Fees – Technology Related			5,834.59	5,834.59
Total Supplies	\$9,154.21	\$8,989.69	\$29,969.26	\$48,113.16
800 <u>Other Objects</u>				
810 Dues and Fees		415.00		415.00
Total Other Objects		\$415.00		\$415.00
Total 1240 Academic Support	\$3,556,194.66	\$3,111,848.35	\$654,944.55	\$7,322,987.56

LEA : 123463603 Hatboro-Horsham SD

Printed 1/2/2020 9:53:44 AM

General Fund (10)

1241 Learning Support – Public	Elementary	Secondary	Federal	Total
100 Personnel Services – Salaries				
100 Personnel Services – Salaries	1,576,901.04	1,419,721.12	415,128.50	3,411,750.66
Total Personnel Services – Salaries	\$1,576,901.04	\$1,419,721.12	\$415,128.50	\$3,411,750.66
200 Personnel Services – Employee Benefits				
220 Social Security Contributions	111,990.33	103,481.52	28,810.72	244,282.57
230 PSERS Retirement Contributions	554,898.74	514,131.74	64,249.61	1,133,280.09
270 Group Insurance – Self-Insurance	552,877.68	511,549.40	113,450.66	1,177,877.74
Total Personnel Services – Employee Benefits	\$1,219,766.75	\$1,129,162.66	\$206,510.99	\$2,555,440.40
300 Purchased Professional and Technical Services				
323 Professional Educational Services – Other Educational Agencies	3,775.12	249.35		4,024.47
329 Professional Educational Services – Other	518,686.68	93,111.29	2,060.80	613,858.77
Total Purchased Professional and Technical Services	\$522,461.80	\$93,360.64	\$2,060.80	\$617,883.24
500 Other Purchased Services				
563 Tuition To Nonpublic Schools	170,011.00			170,011.00
580 Travel			1,275.00	1,275.00
Total Other Purchased Services	\$170,011.00		\$1,275.00	\$171,286.00
600 Supplies				
610 General Supplies	3,243.89	6,871.36	6,383.70	16,498.95
640 Books and Periodicals		1,080.18	17,750.97	18,831.15
650 Supplies & Fees – Technology Related			5,834.59	5,834.59
Total Supplies	\$3,243.89	\$7,951.54	\$29,969.26	\$41,164.69
Total 1241 Learning Support – Public	\$3,492,384.48	\$2,650,195.96	\$654,944.55	\$6,797,524.99

LEA : 123463603 Hatboro-Horsham SD

Printed 1/2/2020 9:53:44 AM

General Fund (10)				
1243 Gifted Support				
	<u>Elementary</u>	<u>Secondary</u>	<u>Federal</u>	<u>Total</u>
100 <u>Personnel Services – Salaries</u>				
100 Personnel Services – Salaries		336,074.02		336,074.02
Total Personnel Services – Salaries		\$336,074.02		\$336,074.02
200 <u>Personnel Services – Employee Benefits</u>				
220 Social Security Contributions	8,093.32	17,198.32		25,291.64
230 PSERS Retirement Contributions	35,952.23	76,398.50		112,350.73
270 Group Insurance – Self-Insurance	13,854.31	29,440.40		43,294.71
Total Personnel Services – Employee Benefits	\$57,899.86	\$123,037.22		\$180,937.08
300 <u>Purchased Professional and Technical Services</u>				
329 Professional Educational Services – Other		1,088.00		1,088.00
Total Purchased Professional and Technical Services		\$1,088.00		\$1,088.00
600 <u>Supplies</u>				
610 General Supplies	5,910.32	645.95		6,556.27
630 Food		392.20		392.20
Total Supplies	\$5,910.32	\$1,038.15		\$6,948.47
800 <u>Other Objects</u>				
810 Dues and Fees		415.00		415.00
Total Other Objects		\$415.00		\$415.00
Total 1243 Gifted Support	\$63,810.18	\$461,652.39		\$525,462.57

LEA : 123463603 Hatboro-Horsham SD

Printed 1/2/2020 9:53:44 AM

General Fund (10)

1270 Multi-Handicapped Support	<u>Elementary</u>	<u>Secondary</u>	<u>Federal</u>	<u>Total</u>
300 <u>Purchased Professional and Technical Services</u>				
322 Professional Educational Services – lus	38,100.30			38,100.30
Total Purchased Professional and Technical Services	\$38,100.30			\$38,100.30
600 <u>Supplies</u>				
610 General Supplies	472.17			472.17
Total Supplies	\$472.17			\$472.17
Total 1270 Multi-Handicapped Support	\$38,572.47			\$38,572.47

LEA : 123463603 Hatboro-Horsham SD

Printed 1/2/2020 9:53:44 AM

General Fund (10)

1280 Early Intervention Support	<u>Elementary</u>	<u>Secondary</u>	<u>Federal</u>	<u>Total</u>
300 <u>Purchased Professional and Technical Services</u>				
322 Professional Educational Services – lus	37,668.91			37,668.91
Total Purchased Professional and Technical Services	\$37,668.91			\$37,668.91
Total 1280 Early Intervention Support	\$37,668.91			\$37,668.91

LEA : 123463603 Hatboro-Horsham SD

Printed 1/2/2020 9:53:44 AM

General Fund (10)				
1290 Special Programs - Other Support	<u>Elementary</u>	<u>Secondary</u>	<u>Federal</u>	<u>Total</u>
100 <u>Personnel Services – Salaries</u>				
100 Personnel Services – Salaries	51,224.47	47,284.13		98,508.60
Total Personnel Services – Salaries	\$51,224.47	\$47,284.13		\$98,508.60
200 <u>Personnel Services – Employee Benefits</u>				
220 Social Security Contributions	3,744.61	3,456.56		7,201.17
230 PSERS Retirement Contributions	17,119.92	15,803.01		32,922.93
270 Group Insurance – Self-Insurance	15,701.59	14,493.80		30,195.39
Total Personnel Services – Employee Benefits	\$36,566.12	\$33,753.37		\$70,319.49
300 <u>Purchased Professional and Technical Services</u>				
322 Professional Educational Services – Ius	20,839.63	19,236.59	14,200.00	54,276.22
323 Professional Educational Services – Other Educational Agencies	751.40	693.60	3,525.00	4,970.00
329 Professional Educational Services – Other	144,603.06	133,479.75		278,082.81
330 Other Professional Services			18,900.00	18,900.00
Total Purchased Professional and Technical Services	\$166,194.09	\$153,409.94	\$36,625.00	\$356,229.03
500 <u>Other Purchased Services</u>				
549 Other Advertising/Public Relations	293.87	271.26		565.13
550 Printing and Binding	320.84	296.16		617.00
562 Tuition To Pennsylvania Charter Schools	199,480.79	184,136.12		383,616.91
567 Tuition To Approved Private Schools (APS) and PA Chartered Schools for the Deaf and Blind	11,060.75	10,209.92		21,270.67
569 Tuition – Other	31,970.36	77,306.06		109,276.42
594 IU Payment By Withholding for Institutionalized Children’s Programs – Special Classes	1,593.12	1,470.58		3,063.70
Total Other Purchased Services	\$244,719.73	\$273,690.10		\$518,409.83
600 <u>Supplies</u>				
610 General Supplies	4,580.39	2,533.96		7,114.35
650 Supplies & Fees – Technology Related	1,505.40	1,389.60		2,895.00
Total Supplies	\$6,085.79	\$3,923.56		\$10,009.35
Total 1290 Special Programs - Other Support	\$504,790.20	\$512,061.10	\$36,625.00	\$1,053,476.30

LEA : 123463603 Hatboro-Horsham SD

Printed 1/2/2020 9:53:44 AM

General Fund (10)

1300 Vocational Education	Elementary	Secondary	Federal	Total
100 <u>Personnel Services – Salaries</u>				
100 Personnel Services – Salaries		794,221.05		794,221.05
Total Personnel Services – Salaries		\$794,221.05		\$794,221.05
200 <u>Personnel Services – Employee Benefits</u>				
220 Social Security Contributions		57,525.41		57,525.41
230 PSERS Retirement Contributions		265,503.52		265,503.52
270 Group Insurance – Self-Insurance		153,552.55		153,552.55
Total Personnel Services – Employee Benefits		\$476,581.48		\$476,581.48
300 <u>Purchased Professional and Technical Services</u>				
329 Professional Educational Services – Other		31,690.08		31,690.08
Total Purchased Professional and Technical Services		\$31,690.08		\$31,690.08
400 <u>Purchased Property Services</u>				
430 Repairs and Maintenance Services		1,584.99		1,584.99
Total Purchased Property Services		\$1,584.99		\$1,584.99
500 <u>Other Purchased Services</u>				
564 Tuition To Career and Technology Centers		1,164,741.00		1,164,741.00
Total Other Purchased Services		\$1,164,741.00		\$1,164,741.00
600 <u>Supplies</u>				
610 General Supplies		27,714.54		27,714.54
640 Books and Periodicals		40.00		40.00
Total Supplies		\$27,754.54		\$27,754.54
Total 1300 Vocational Education		\$2,496,573.14		\$2,496,573.14

LEA : 123463603 Hatboro-Horsham SD

Printed 1/2/2020 9:53:44 AM

General Fund (10)

1400 Other Instructional Programs – Elementary / Secondary	Elementary	Secondary	Federal	Total
100 <u>Personnel Services – Salaries</u>				
100 Personnel Services – Salaries	2,490.00	22,630.00		25,120.00
Total Personnel Services – Salaries	\$2,490.00	\$22,630.00		\$25,120.00
200 <u>Personnel Services – Employee Benefits</u>				
220 Social Security Contributions	622.82	1,264.50		1,887.32
230 PSERS Retirement Contributions	1,557.07	3,161.32		4,718.39
270 Group Insurance – Self-Insurance	507.79	1,030.97		1,538.76
Total Personnel Services – Employee Benefits	\$2,687.68	\$5,456.79		\$8,144.47
300 <u>Purchased Professional and Technical Services</u>				
323 Professional Educational Services – Other Educational Agencies	2,475.00	5,025.00		7,500.00
329 Professional Educational Services – Other		18,909.14		18,909.14
Total Purchased Professional and Technical Services	\$2,475.00	\$23,934.14		\$26,409.14
500 <u>Other Purchased Services</u>				
563 Tuition To Nonpublic Schools	39,987.60	81,186.95		121,174.55
Total Other Purchased Services	\$39,987.60	\$81,186.95		\$121,174.55
600 <u>Supplies</u>				
610 General Supplies		1,367.82		1,367.82
630 Food		375.48		375.48
640 Books and Periodicals		495.35		495.35
650 Supplies & Fees – Technology Related		6,550.00		6,550.00
Total Supplies		\$8,788.65		\$8,788.65
Total 1400 Other Instructional Programs – Elementary / Secondary	\$47,640.28	\$141,996.53		\$189,636.81

LEA : 123463603 Hatboro-Horsham SD

Printed 1/2/2020 9:53:44 AM

General Fund (10)

1430 Homebound Instruction	<u>Elementary</u>	<u>Secondary</u>	<u>Federal</u>	<u>Total</u>
100 <u>Personnel Services – Salaries</u>				
100 Personnel Services – Salaries	2,490.00	22,630.00		25,120.00
Total Personnel Services – Salaries	\$2,490.00	\$22,630.00		\$25,120.00
200 <u>Personnel Services – Employee Benefits</u>				
220 Social Security Contributions	622.82	1,264.50		1,887.32
230 PSERS Retirement Contributions	1,557.07	3,161.32		4,718.39
270 Group Insurance – Self-Insurance	507.79	1,030.97		1,538.76
Total Personnel Services – Employee Benefits	\$2,687.68	\$5,456.79		\$8,144.47
Total 1430 Homebound Instruction	\$5,177.68	\$28,086.79		\$33,264.47

LEA : 123463603 Hatboro-Horsham SD

Printed 1/2/2020 9:53:44 AM

General Fund (10)				
1440 Alternative Regular Education Programs	<u>Elementary</u>	<u>Secondary</u>	<u>Federal</u>	<u>Total</u>
300 <u>Purchased Professional and Technical Services</u>				
323 Professional Educational Services – Other Educational Agencies	2,475.00	5,025.00		7,500.00
329 Professional Educational Services – Other		18,909.14		18,909.14
Total Purchased Professional and Technical Services	\$2,475.00	\$23,934.14		\$26,409.14
500 <u>Other Purchased Services</u>				
563 Tuition To Nonpublic Schools	39,987.60	81,186.95		121,174.55
Total Other Purchased Services	\$39,987.60	\$81,186.95		\$121,174.55
600 <u>Supplies</u>				
610 General Supplies		1,367.82		1,367.82
630 Food		375.48		375.48
640 Books and Periodicals		495.35		495.35
650 Supplies & Fees – Technology Related		6,550.00		6,550.00
Total Supplies		\$8,788.65		\$8,788.65
Total 1440 Alternative Regular Education Programs	\$42,462.60	\$113,909.74		\$156,372.34

LEA : 123463603 Hatboro-Horsham SD

Printed 1/2/2020 9:53:44 AM

General Fund (10)

1441 Adjudicated / Court-Placed Programs	<u>Elementary</u>	<u>Secondary</u>	<u>Federal</u>	<u>Total</u>
300 <u>Purchased Professional and Technical Services</u>				
329 Professional Educational Services – Other		896.00		896.00
Total Purchased Professional and Technical Services		\$896.00		\$896.00
500 <u>Other Purchased Services</u>				
563 Tuition To Nonpublic Schools	39,987.60	81,186.95		121,174.55
Total Other Purchased Services	\$39,987.60	\$81,186.95		\$121,174.55
Total 1441 Adjudicated / Court-Placed Programs	\$39,987.60	\$82,082.95		\$122,070.55

LEA : 123463603 Hatboro-Horsham SD

Printed 1/2/2020 9:53:44 AM

General Fund (10)

1442 Alternative Education Programs	<u>Elementary</u>	<u>Secondary</u>	<u>Federal</u>	<u>Total</u>
300 <u>Purchased Professional and Technical Services</u>				
323 Professional Educational Services – Other Educational Agencies	2,475.00	5,025.00		7,500.00
329 Professional Educational Services – Other		18,013.14		18,013.14
Total Purchased Professional and Technical Services	\$2,475.00	\$23,038.14		\$25,513.14
600 <u>Supplies</u>				
610 General Supplies		1,367.82		1,367.82
630 Food		375.48		375.48
640 Books and Periodicals		495.35		495.35
650 Supplies & Fees – Technology Related		6,550.00		6,550.00
Total Supplies		\$8,788.65		\$8,788.65
Total 1442 Alternative Education Programs	\$2,475.00	\$31,826.79		\$34,301.79

LEA : 123463603 Hatboro-Horsham SD

Printed 1/2/2020 9:53:44 AM

General Fund (10)

1500 Nonpublic School Programs

	<u>Elementary</u>	<u>Secondary</u>	<u>Federal</u>	<u>Total</u>
300 <u>Purchased Professional and Technical Services</u>				
322 Professional Educational Services – lus			2,397.88	2,397.88
Total Purchased Professional and Technical Services			\$2,397.88	\$2,397.88
Total 1500 Nonpublic School Programs			\$2,397.88	\$2,397.88

LEA : 123463603 Hatboro-Horsham SD

Printed 1/2/2020 9:53:50 AM

General Fund (10)

2000 Support Services

Total

100	<u>Personnel Services – Salaries</u>	
100	Personnel Services – Salaries	14,594,397.45
Total Personnel Services – Salaries		\$14,594,397.45
200	<u>Personnel Services – Employee Benefits</u>	
210	Group Insurance – Contracted Provider	10,865.60
220	Social Security Contributions	1,059,765.07
230	PSERS Retirement Contributions	4,774,137.55
240	Tuition Reimbursement	115,129.30
270	Group Insurance – Self-Insurance	2,924,727.93
Total Personnel Services – Employee Benefits		\$8,884,625.45
300	<u>Purchased Professional and Technical Services</u>	
323	Professional Educational Services – Other Educational Agencies	10,176.00
329	Professional Educational Services – Other	128,276.93
330	Other Professional Services	844,163.04
340	Technical Services	692,147.59
350	Security / Safety Services	267,473.11
360	Employee Training and Development Services	178,561.12
390	Other Purchased Professional and Technical Services	19,277.38
Total Purchased Professional and Technical Services		\$2,140,075.17
400	<u>Purchased Property Services</u>	
410	Cleaning Services	142,342.74
420	Utility Services	201,743.84
430	Repairs and Maintenance Services	1,113,350.14
440	Rentals	905,939.53
Total Purchased Property Services		\$2,363,376.25
500	<u>Other Purchased Services</u>	
513	Contracted Carriers	643,569.54
516	Student Transportation Services From the IU	1,270,007.38
520	Insurance – General	130,920.00
521	Fire Insurance	113,498.00
522	Automotive Liability Insurance	117,070.00
523	General Property and Liability Insurance	36,650.00
529	Other Insurance	3,323.00
530	Communications	150,426.78
549	Other Advertising/Public Relations	6,771.22
550	Printing and Binding	17,079.00
580	Travel	90,400.87
591	Services Purchased Locally	41,966.49
595	IU Payments By Withholding	74,410.81
596	Direct Payments To Intermediate Units	5,142.08
Total Other Purchased Services		\$2,701,235.17
600	<u>Supplies</u>	
610	General Supplies	803,845.35
620	Energy	1,347,440.69

LEA : 123463603 Hatboro-Horsham SD

Printed 1/2/2020 9:53:50 AM

General Fund (10)

2000 Support Services

Total

600 <u>Supplies</u>	
630 Food	5,724.65
640 Books and Periodicals	216,058.20
650 Supplies & Fees – Technology Related	443,579.74
Total Supplies	\$2,816,648.63
700 <u>Property</u>	
752 Capital Equipment – Original and Additional	20,372.11
756 Capitalized Technology Equipment – Original	256,367.80
762 Capitalized Equipment - Replacement	67,359.86
Total Property	\$344,099.77
800 <u>Other Objects</u>	
810 Dues and Fees	87,012.82
Total Other Objects	\$87,012.82
Total 2000 Support Services	\$33,931,470.71

LEA : 123463603 Hatboro-Horsham SD

Printed 1/2/2020 9:53:50 AM

General Fund (10)				
2100 Support Services – Students	<u>Elementary</u>	<u>Secondary</u>	<u>Federal</u>	<u>Total</u>
100 <u>Personnel Services – Salaries</u>				
100 Personnel Services – Salaries	930,163.55	1,141,920.98		2,233,609.04
Total Personnel Services – Salaries	\$930,163.55	\$1,141,920.98		\$2,233,609.04
200 <u>Personnel Services – Employee Benefits</u>				
220 Social Security Contributions	57,365.52	93,085.07		162,849.77
230 PSERS Retirement Contributions	260,655.60	423,446.32		737,069.14
270 Group Insurance – Self-Insurance	163,138.58	262,046.99		453,910.79
Total Personnel Services – Employee Benefits	\$481,159.70	\$778,578.38		\$1,353,829.70
300 <u>Purchased Professional and Technical Services</u>				
323 Professional Educational Services – Other Educational Agencies		10,176.00		10,176.00
329 Professional Educational Services – Other	5,101.00	5,101.00		10,202.00
330 Other Professional Services	140,548.51	137,498.51	5,557.00	284,604.02
340 Technical Services				754.67
Total Purchased Professional and Technical Services	\$145,649.51	\$152,775.51	\$5,557.00	\$305,736.69
500 <u>Other Purchased Services</u>				
580 Travel	30.64	30.63		61.27
Total Other Purchased Services	\$30.64	\$30.63		\$61.27
600 <u>Supplies</u>				
610 General Supplies	2,654.18	1,801.01		5,185.28
630 Food				1,249.40
640 Books and Periodicals	75.00			75.00
650 Supplies & Fees – Technology Related		8,472.00		8,472.00
Total Supplies	\$2,729.18	\$10,273.01		\$14,981.68
800 <u>Other Objects</u>				
810 Dues and Fees	181.50	277.50		539.00
Total Other Objects	\$181.50	\$277.50		\$539.00
Total 2100 Support Services – Students	\$1,559,914.08	\$2,083,856.01	\$5,557.00	\$3,908,757.38

LEA : 123463603 Hatboro-Horsham SD

Printed 1/2/2020 9:53:50 AM

General Fund (10)

2110 Supervision of Student Services	<u>Elementary</u>	<u>Secondary</u>	<u>Federal</u>	<u>Total</u>
100 <u>Personnel Services – Salaries</u>				
100 Personnel Services – Salaries	41,166.37	33,681.57		74,847.94
Total Personnel Services – Salaries	\$41,166.37	\$33,681.57		\$74,847.94
200 <u>Personnel Services – Employee Benefits</u>				
220 Social Security Contributions	2,956.57	2,419.01		5,375.58
230 PSERS Retirement Contributions	13,761.95	11,259.77		25,021.72
270 Group Insurance – Self-Insurance	14,925.49	12,211.75		27,137.24
Total Personnel Services – Employee Benefits	\$31,644.01	\$25,890.53		\$57,534.54
800 <u>Other Objects</u>				
810 Dues and Fees	181.50	148.50		330.00
Total Other Objects	\$181.50	\$148.50		\$330.00
Total 2110 Supervision of Student Services	\$72,991.88	\$59,720.60		\$132,712.48

LEA : 123463603 Hatboro-Horsham SD

Printed 1/2/2020 9:53:50 AM

General Fund (10)

2119 Supervision of Student Services – All Other Supervision	<u>Elementary</u>	<u>Secondary</u>	<u>Federal</u>	<u>Total</u>
100 <u>Personnel Services – Salaries</u>				
100 Personnel Services – Salaries	41,166.37	33,681.57		74,847.94
Total Personnel Services – Salaries	\$41,166.37	\$33,681.57		\$74,847.94
200 <u>Personnel Services – Employee Benefits</u>				
220 Social Security Contributions	2,956.57	2,419.01		5,375.58
230 PSERS Retirement Contributions	13,761.95	11,259.77		25,021.72
270 Group Insurance – Self-Insurance	14,925.49	12,211.75		27,137.24
Total Personnel Services – Employee Benefits	\$31,644.01	\$25,890.53		\$57,534.54
800 <u>Other Objects</u>				
810 Dues and Fees	181.50	148.50		330.00
Total Other Objects	\$181.50	\$148.50		\$330.00
Total 2119 Supervision of Student Services – All Other Supervision	\$72,991.88	\$59,720.60		\$132,712.48

LEA : 123463603 Hatboro-Horsham SD

Printed 1/2/2020 9:53:50 AM

General Fund (10)				
2120 Guidance Services	<u>Elementary</u>	<u>Secondary</u>	<u>Federal</u>	<u>Total</u>
100 <u>Personnel Services – Salaries</u>				
100 Personnel Services – Salaries	620,571.97	839,814.20		1,460,386.17
Total Personnel Services – Salaries	\$620,571.97	\$839,814.20		\$1,460,386.17
200 <u>Personnel Services – Employee Benefits</u>				
220 Social Security Contributions	35,190.71	71,447.82		106,638.53
230 PSERS Retirement Contributions	160,431.35	325,724.25		486,155.60
270 Group Insurance – Self-Insurance	98,633.29	200,255.45		298,888.74
Total Personnel Services – Employee Benefits	\$294,255.35	\$597,427.52		\$891,682.87
300 <u>Purchased Professional and Technical Services</u>				
323 Professional Educational Services – Other Educational Agencies		10,176.00		10,176.00
Total Purchased Professional and Technical Services		\$10,176.00		\$10,176.00
600 <u>Supplies</u>				
610 General Supplies	1,404.18	551.01		1,955.19
640 Books and Periodicals	75.00			75.00
650 Supplies & Fees – Technology Related		8,472.00		8,472.00
Total Supplies	\$1,479.18	\$9,023.01		\$10,502.19
800 <u>Other Objects</u>				
810 Dues and Fees		129.00		129.00
Total Other Objects		\$129.00		\$129.00
Total 2120 Guidance Services	\$916,306.50	\$1,456,569.73		\$2,372,876.23

LEA : 123463603 Hatboro-Horsham SD

Printed 1/2/2020 9:53:50 AM

General Fund (10)				
2140 Psychological Services				
	<u>Elementary</u>	<u>Secondary</u>	<u>Federal</u>	<u>Total</u>
100 <u>Personnel Services – Salaries</u>				
100 Personnel Services – Salaries	268,425.21	268,425.21		536,850.42
Total Personnel Services – Salaries	\$268,425.21	\$268,425.21		\$536,850.42
200 <u>Personnel Services – Employee Benefits</u>				
220 Social Security Contributions	19,218.24	19,218.24		38,436.48
230 PSERS Retirement Contributions	86,462.30	86,462.30		172,924.60
270 Group Insurance – Self-Insurance	49,579.80	49,579.79		99,159.59
Total Personnel Services – Employee Benefits	\$155,260.34	\$155,260.33		\$310,520.67
300 <u>Purchased Professional and Technical Services</u>				
329 Professional Educational Services – Other	5,101.00	5,101.00		10,202.00
330 Other Professional Services	140,548.51	137,498.51		278,047.02
Total Purchased Professional and Technical Services	\$145,649.51	\$142,599.51		\$288,249.02
500 <u>Other Purchased Services</u>				
580 Travel	30.64	30.63		61.27
Total Other Purchased Services	\$30.64	\$30.63		\$61.27
600 <u>Supplies</u>				
610 General Supplies	1,250.00	1,250.00		2,500.00
Total Supplies	\$1,250.00	\$1,250.00		\$2,500.00
Total 2140 Psychological Services	\$570,615.70	\$567,565.68		\$1,138,181.38

LEA : 123463603 Hatboro-Horsham SD

Printed 1/2/2020 9:53:50 AM

General Fund (10)				
2160 Social Work Services	<u>Elementary</u>	<u>Secondary</u>	<u>Federal</u>	<u>Total</u>
100 <u>Personnel Services – Salaries</u>				
100 Personnel Services – Salaries				79,814.13
Total Personnel Services – Salaries				\$79,814.13
200 <u>Personnel Services – Employee Benefits</u>				
220 Social Security Contributions				6,312.08
230 PSERS Retirement Contributions				25,646.99
270 Group Insurance – Self-Insurance				2,500.00
Total Personnel Services – Employee Benefits				\$34,459.07
300 <u>Purchased Professional and Technical Services</u>				
330 Other Professional Services			5,557.00	6,557.00
Total Purchased Professional and Technical Services			\$5,557.00	\$6,557.00
600 <u>Supplies</u>				
610 General Supplies				730.09
630 Food				1,249.40
Total Supplies				\$1,979.49
800 <u>Other Objects</u>				
810 Dues and Fees				80.00
Total Other Objects				\$80.00
Total 2160 Social Work Services			\$5,557.00	\$122,889.69

LEA : 123463603 Hatboro-Horsham SD

Printed 1/2/2020 9:53:50 AM

General Fund (10)				
2170 Student Accounting Services	<u>Elementary</u>	<u>Secondary</u>	<u>Federal</u>	<u>Total</u>
100 <u>Personnel Services – Salaries</u>				
100 Personnel Services – Salaries				81,710.38
Total Personnel Services – Salaries				\$81,710.38
200 <u>Personnel Services – Employee Benefits</u>				
220 Social Security Contributions				6,087.10
230 PSERS Retirement Contributions				27,320.23
270 Group Insurance – Self-Insurance				26,225.22
Total Personnel Services – Employee Benefits				\$59,632.55
300 <u>Purchased Professional and Technical Services</u>				
340 Technical Services				754.67
Total Purchased Professional and Technical Services				\$754.67
Total 2170 Student Accounting Services				\$142,097.60

LEA : 123463603 Hatboro-Horsham SD

Printed 1/2/2020 9:53:50 AM

General Fund (10)				
2200 Support Services – Instructional Staff	<u>Elementary</u>	<u>Secondary</u>	<u>Federal</u>	<u>Total</u>
100 <u>Personnel Services – Salaries</u>				
100 Personnel Services – Salaries	818,588.62	397,020.51		1,215,609.13
Total Personnel Services – Salaries	\$818,588.62	\$397,020.51		\$1,215,609.13
200 <u>Personnel Services – Employee Benefits</u>				
220 Social Security Contributions	44,049.74	44,049.73		88,099.47
230 PSERS Retirement Contributions	198,676.91	198,676.60		397,353.51
240 Tuition Reimbursement	21,501.58	48,459.34		69,960.92
270 Group Insurance – Self-Insurance	120,638.10	120,638.09		241,276.19
Total Personnel Services – Employee Benefits	\$384,866.33	\$411,823.76		\$796,690.09
300 <u>Purchased Professional and Technical Services</u>				
329 Professional Educational Services – Other	25,694.26	46,003.25		71,697.51
360 Employee Training and Development Services	44,869.16	57,525.51	48,808.80	151,203.47
Total Purchased Professional and Technical Services	\$70,563.42	\$103,528.76	\$48,808.80	\$222,900.98
400 <u>Purchased Property Services</u>				
430 Repairs and Maintenance Services		1,671.36		1,671.36
Total Purchased Property Services		\$1,671.36		\$1,671.36
500 <u>Other Purchased Services</u>				
530 Communications	7,000.34	7,000.33		14,000.67
580 Travel	6,292.44	18,134.79	16,964.88	41,392.11
Total Other Purchased Services	\$13,292.78	\$25,135.12	\$16,964.88	\$55,392.78
600 <u>Supplies</u>				
610 General Supplies	18,413.97	23,182.98	109.00	41,705.95
640 Books and Periodicals	103,945.80	108,271.54		212,217.34
650 Supplies & Fees – Technology Related	93,014.28	113,293.61		206,307.89
Total Supplies	\$215,374.05	\$244,748.13	\$109.00	\$460,231.18
800 <u>Other Objects</u>				
810 Dues and Fees	7,693.43	7,693.43		15,386.86
Total Other Objects	\$7,693.43	\$7,693.43		\$15,386.86
Total 2200 Support Services – Instructional Staff	\$1,510,378.63	\$1,191,621.07	\$65,882.68	\$2,767,882.38

LEA : 123463603 Hatboro-Horsham SD

Printed 1/2/2020 9:53:50 AM

General Fund (10)

2220 Technology Support Services	<u>Elementary</u>	<u>Secondary</u>	<u>Federal</u>	<u>Total</u>
400 <u>Purchased Property Services</u>				
430 Repairs and Maintenance Services		421.36		421.36
Total Purchased Property Services		\$421.36		\$421.36
600 <u>Supplies</u>				
610 General Supplies		7,693.01		7,693.01
Total Supplies		\$7,693.01		\$7,693.01
Total 2220 Technology Support Services		\$8,114.37		\$8,114.37

LEA : 123463603 Hatboro-Horsham SD

Printed 1/2/2020 9:53:50 AM

General Fund (10)

2240 Computer-Assisted Instruction Support Services

	<u>Elementary</u>	<u>Secondary</u>	<u>Federal</u>	<u>Total</u>
500 <u>Other Purchased Services</u>				
530 Communications	7,000.34	7,000.33		14,000.67
Total Other Purchased Services	\$7,000.34	\$7,000.33		\$14,000.67
600 <u>Supplies</u>				
610 General Supplies	524.49	524.48		1,048.97
650 Supplies & Fees – Technology Related	82,540.21	82,540.21		165,080.42
Total Supplies	\$83,064.70	\$83,064.69		\$166,129.39
Total 2240 Computer-Assisted Instruction Support Services	\$90,065.04	\$90,065.02		\$180,130.06

LEA : 123463603 Hatboro-Horsham SD

Printed 1/2/2020 9:53:50 AM

General Fund (10)				
2250 School Library Services	<u>Elementary</u>	<u>Secondary</u>	<u>Federal</u>	<u>Total</u>
100 <u>Personnel Services – Salaries</u>				
100 Personnel Services – Salaries	346,836.64	76,712.11		423,548.75
Total Personnel Services – Salaries	\$346,836.64	\$76,712.11		\$423,548.75
200 <u>Personnel Services – Employee Benefits</u>				
220 Social Security Contributions	15,060.27	15,060.27		30,120.54
230 PSERS Retirement Contributions	69,519.58	69,519.27		139,038.85
270 Group Insurance – Self-Insurance	63,622.87	63,622.87		127,245.74
Total Personnel Services – Employee Benefits	\$148,202.72	\$148,202.41		\$296,405.13
300 <u>Purchased Professional and Technical Services</u>				
329 Professional Educational Services – Other	25,694.26	46,003.25		71,697.51
Total Purchased Professional and Technical Services	\$25,694.26	\$46,003.25		\$71,697.51
400 <u>Purchased Property Services</u>				
430 Repairs and Maintenance Services		1,250.00		1,250.00
Total Purchased Property Services		\$1,250.00		\$1,250.00
600 <u>Supplies</u>				
610 General Supplies	3,409.03	485.05		3,894.08
640 Books and Periodicals	12,830.48	17,156.23		29,986.71
650 Supplies & Fees – Technology Related	7,865.25	28,144.58		36,009.83
Total Supplies	\$24,104.76	\$45,785.86		\$69,890.62
Total 2250 School Library Services	\$544,838.38	\$317,953.63		\$862,792.01

LEA : 123463603 Hatboro-Horsham SD

Printed 1/2/2020 9:53:50 AM

General Fund (10)

2260 Instruction and Curriculum Development Services	<u>Elementary</u>	<u>Secondary</u>	<u>Federal</u>	<u>Total</u>
100 <u>Personnel Services – Salaries</u>				
100 Personnel Services – Salaries	376,468.21	320,308.40		696,776.61
Total Personnel Services – Salaries	\$376,468.21	\$320,308.40		\$696,776.61
200 <u>Personnel Services – Employee Benefits</u>				
220 Social Security Contributions	25,285.44	25,285.44		50,570.88
230 PSERS Retirement Contributions	112,909.15	112,909.15		225,818.30
270 Group Insurance – Self-Insurance	50,029.30	50,029.29		100,058.59
Total Personnel Services – Employee Benefits	\$188,223.89	\$188,223.88		\$376,447.77
600 <u>Supplies</u>				
610 General Supplies	14,480.45	14,480.44	109.00	29,069.89
640 Books and Periodicals	90,236.01	90,236.01		180,472.02
650 Supplies & Fees – Technology Related	2,608.82	2,608.82		5,217.64
Total Supplies	\$107,325.28	\$107,325.27	\$109.00	\$214,759.55
800 <u>Other Objects</u>				
810 Dues and Fees	7,693.43	7,693.43		15,386.86
Total Other Objects	\$7,693.43	\$7,693.43		\$15,386.86
Total 2260 Instruction and Curriculum Development Services	\$679,710.81	\$623,550.98	\$109.00	\$1,303,370.79

LEA : 123463603 Hatboro-Horsham SD

Printed 1/2/2020 9:53:50 AM

General Fund (10)				
2270 Instructional Staff Professional Development Services	<u>Elementary</u>	<u>Secondary</u>	<u>Federal</u>	<u>Total</u>
200 <u>Personnel Services – Employee Benefits</u>				
240 Tuition Reimbursement	21,501.58	48,459.34		69,960.92
270 Group Insurance – Self-Insurance	5,437.45	5,437.45		10,874.90
Total Personnel Services – Employee Benefits	\$26,939.03	\$53,896.79		\$80,835.82
300 <u>Purchased Professional and Technical Services</u>				
360 Employee Training and Development Services	44,869.16	57,525.51	48,808.80	151,203.47
Total Purchased Professional and Technical Services	\$44,869.16	\$57,525.51	\$48,808.80	\$151,203.47
500 <u>Other Purchased Services</u>				
580 Travel	6,292.44	18,134.79	16,964.88	41,392.11
Total Other Purchased Services	\$6,292.44	\$18,134.79	\$16,964.88	\$41,392.11
600 <u>Supplies</u>				
640 Books and Periodicals	879.31	879.30		1,758.61
Total Supplies	\$879.31	\$879.30		\$1,758.61
Total 2270 Instructional Staff Professional Development Services	\$78,979.94	\$130,436.39	\$65,773.68	\$275,190.01

LEA : 123463603 Hatboro-Horsham SD

Printed 1/2/2020 9:53:50 AM

General Fund (10)

2290 Other Instructional Staff Services	<u>Elementary</u>	<u>Secondary</u>	<u>Federal</u>	<u>Total</u>
100 <u>Personnel Services – Salaries</u>				
100 Personnel Services – Salaries	95,283.77			95,283.77
Total Personnel Services – Salaries	\$95,283.77			\$95,283.77
200 <u>Personnel Services – Employee Benefits</u>				
220 Social Security Contributions	3,704.03	3,704.02		7,408.05
230 PSERS Retirement Contributions	16,248.18	16,248.18		32,496.36
270 Group Insurance – Self-Insurance	1,548.48	1,548.48		3,096.96
Total Personnel Services – Employee Benefits	\$21,500.69	\$21,500.68		\$43,001.37
Total 2290 Other Instructional Staff Services	\$116,784.46	\$21,500.68		\$138,285.14

LEA : 123463603 Hatboro-Horsham SD

Printed 1/2/2020 9:53:50 AM

General Fund (10)				
2300 Support Services – Administration	<u>Elementary</u>	<u>Secondary</u>	<u>Federal</u>	<u>Total</u>
100 <u>Personnel Services – Salaries</u>				
100 Personnel Services – Salaries	956,519.86	1,619,705.55		3,577,071.90
Total Personnel Services – Salaries	\$956,519.86	\$1,619,705.55		\$3,577,071.90
200 <u>Personnel Services – Employee Benefits</u>				
210 Group Insurance – Contracted Provider				5,162.00
220 Social Security Contributions	76,526.08	114,789.13		255,505.56
230 PSERS Retirement Contributions	333,906.92	500,860.39		1,157,260.70
270 Group Insurance – Self-Insurance	189,959.40	284,939.09		581,130.38
Total Personnel Services – Employee Benefits	\$600,392.40	\$900,588.61		\$1,999,058.64
300 <u>Purchased Professional and Technical Services</u>				
329 Professional Educational Services – Other	1,404.63	(140.50)		1,264.13
330 Other Professional Services			1,000.00	179,737.77
Total Purchased Professional and Technical Services	\$1,404.63	(\$140.50)	\$1,000.00	\$181,001.90
400 <u>Purchased Property Services</u>				
410 Cleaning Services				397.50
430 Repairs and Maintenance Services		1,000.00		1,000.00
440 Rentals				9,855.19
Total Purchased Property Services		\$1,000.00		\$11,252.69
500 <u>Other Purchased Services</u>				
520 Insurance – General				130,920.00
530 Communications				3,035.48
580 Travel	224.43	263.52		1,091.86
591 Services Purchased Locally		1,125.00		1,125.00
596 Direct Payments To Intermediate Units				5,142.08
Total Other Purchased Services	\$224.43	\$1,388.52		\$141,314.42
600 <u>Supplies</u>				
610 General Supplies	8,230.27	35,853.44		56,587.25
630 Food				777.18
640 Books and Periodicals		2,839.33		3,293.69
650 Supplies & Fees – Technology Related		3,253.06		3,253.06
Total Supplies	\$8,230.27	\$41,945.83		\$63,911.18
800 <u>Other Objects</u>				
810 Dues and Fees	4,431.20	8,002.25		61,693.60
Total Other Objects	\$4,431.20	\$8,002.25		\$61,693.60
Total 2300 Support Services – Administration	\$1,571,202.79	\$2,572,490.26	\$1,000.00	\$6,035,304.33

LEA : 123463603 Hatboro-Horsham SD

Printed 1/2/2020 9:53:50 AM

General Fund (10)

2310 Board Services

	<u>Elementary</u>	<u>Secondary</u>	<u>Federal</u>	<u>Total</u>
300 <u>Purchased Professional and Technical Services</u>				
330 Other Professional Services			1,000.00	28,000.00
Total Purchased Professional and Technical Services			\$1,000.00	\$28,000.00
500 <u>Other Purchased Services</u>				
520 Insurance – General				130,920.00
530 Communications				3,035.48
580 Travel				603.91
596 Direct Payments To Intermediate Units				5,142.08
Total Other Purchased Services				\$139,701.47
600 <u>Supplies</u>				
610 General Supplies				6,527.00
630 Food				777.18
Total Supplies				\$7,304.18
800 <u>Other Objects</u>				
810 Dues and Fees				12,550.00
Total Other Objects				\$12,550.00
Total 2310 Board Services			\$1,000.00	\$187,555.65

LEA : 123463603 Hatboro-Horsham SD

Printed 1/2/2020 9:53:50 AM

General Fund (10)

2330 Tax Assessment and Collection Services	<u>Elementary</u>	<u>Secondary</u>	<u>Federal</u>	<u>Total</u>
100 <u>Personnel Services – Salaries</u>				
100 Personnel Services – Salaries				18,116.19
Total Personnel Services – Salaries				\$18,116.19
200 <u>Personnel Services – Employee Benefits</u>				
220 Social Security Contributions				1,385.80
Total Personnel Services – Employee Benefits				\$1,385.80
Total 2330 Tax Assessment and Collection Services				\$19,501.99

LEA : 123463603 Hatboro-Horsham SD

Printed 1/2/2020 9:53:50 AM

General Fund (10)

2350 Legal and Accounting Services	<u>Elementary</u>	<u>Secondary</u>	<u>Federal</u>	<u>Total</u>
300 <u>Purchased Professional and Technical Services</u>				
330 Other Professional Services				151,737.77
Total Purchased Professional and Technical Services				\$151,737.77
Total 2350 Legal and Accounting Services				\$151,737.77

LEA : 123463603 Hatboro-Horsham SD

Printed 1/2/2020 9:53:50 AM

General Fund (10)

2360 Office of the Superintendent / Executive Director Services	<u>Elementary</u>	<u>Secondary</u>	<u>Federal</u>	<u>Total</u>
100 <u>Personnel Services – Salaries</u>				
100 Personnel Services – Salaries				908,570.11
Total Personnel Services – Salaries				\$908,570.11
200 <u>Personnel Services – Employee Benefits</u>				
210 Group Insurance – Contracted Provider				5,162.00
220 Social Security Contributions				57,232.40
230 PSERS Retirement Contributions				298,382.47
270 Group Insurance – Self-Insurance				98,517.21
Total Personnel Services – Employee Benefits				\$459,294.08
400 <u>Purchased Property Services</u>				
440 Rentals				9,855.19
Total Purchased Property Services				\$9,855.19
600 <u>Supplies</u>				
610 General Supplies				4,190.03
Total Supplies				\$4,190.03
800 <u>Other Objects</u>				
810 Dues and Fees				36,374.15
Total Other Objects				\$36,374.15
Total 2360 Office of the Superintendent / Executive Director Services				\$1,418,283.56

LEA : 123463603 Hatboro-Horsham SD

Printed 1/2/2020 9:53:50 AM

General Fund (10)				
2370 Community Relations Services	<u>Elementary</u>	<u>Secondary</u>	<u>Federal</u>	<u>Total</u>
100 <u>Personnel Services – Salaries</u>				
100 Personnel Services – Salaries				74,160.19
Total Personnel Services – Salaries				\$74,160.19
200 <u>Personnel Services – Employee Benefits</u>				
220 Social Security Contributions				5,572.15
230 PSERS Retirement Contributions				24,110.92
270 Group Insurance – Self-Insurance				7,714.68
Total Personnel Services – Employee Benefits				\$37,397.75
400 <u>Purchased Property Services</u>				
410 Cleaning Services				397.50
Total Purchased Property Services				\$397.50
600 <u>Supplies</u>				
610 General Supplies				1,786.51
640 Books and Periodicals				454.36
Total Supplies				\$2,240.87
800 <u>Other Objects</u>				
810 Dues and Fees				336.00
Total Other Objects				\$336.00
Total 2370 Community Relations Services				\$114,532.31

LEA : 123463603 Hatboro-Horsham SD

Printed 1/2/2020 9:53:50 AM

General Fund (10)

2380 Office of the Principal Services	Elementary	Secondary	Federal	Total
100 <u>Personnel Services – Salaries</u>				
100 Personnel Services – Salaries	956,519.86	1,619,705.55		2,576,225.41
Total Personnel Services – Salaries	\$956,519.86	\$1,619,705.55		\$2,576,225.41
200 <u>Personnel Services – Employee Benefits</u>				
220 Social Security Contributions	76,526.08	114,789.13		191,315.21
230 PSERS Retirement Contributions	333,906.92	500,860.39		834,767.31
270 Group Insurance – Self-Insurance	189,959.40	284,939.09		474,898.49
Total Personnel Services – Employee Benefits	\$600,392.40	\$900,588.61		\$1,500,981.01
300 <u>Purchased Professional and Technical Services</u>				
329 Professional Educational Services – Other	1,404.63	(140.50)		1,264.13
Total Purchased Professional and Technical Services	\$1,404.63	(\$140.50)		\$1,264.13
400 <u>Purchased Property Services</u>				
430 Repairs and Maintenance Services		1,000.00		1,000.00
Total Purchased Property Services		\$1,000.00		\$1,000.00
500 <u>Other Purchased Services</u>				
580 Travel	224.43	263.52		487.95
591 Services Purchased Locally		1,125.00		1,125.00
Total Other Purchased Services	\$224.43	\$1,388.52		\$1,612.95
600 <u>Supplies</u>				
610 General Supplies	8,230.27	35,853.44		44,083.71
640 Books and Periodicals		2,839.33		2,839.33
650 Supplies & Fees – Technology Related		3,253.06		3,253.06
Total Supplies	\$8,230.27	\$41,945.83		\$50,176.10
800 <u>Other Objects</u>				
810 Dues and Fees	4,431.20	8,002.25		12,433.45
Total Other Objects	\$4,431.20	\$8,002.25		\$12,433.45
Total 2380 Office of the Principal Services	\$1,571,202.79	\$2,572,490.26		\$4,143,693.05

LEA : 123463603 Hatboro-Horsham SD

Printed 1/2/2020 9:53:50 AM

General Fund (10)				
2400 Support Services – Pupil Health	<u>Elementary</u>	<u>Secondary</u>	<u>Federal</u>	<u>Total</u>
100 <u>Personnel Services – Salaries</u>				
100 Personnel Services – Salaries				594,563.03
Total Personnel Services – Salaries				\$594,563.03
200 <u>Personnel Services – Employee Benefits</u>				
220 Social Security Contributions				44,853.26
230 PSERS Retirement Contributions				198,842.60
270 Group Insurance – Self-Insurance				73,002.65
Total Personnel Services – Employee Benefits				\$316,698.51
300 <u>Purchased Professional and Technical Services</u>				
329 Professional Educational Services – Other				16,395.67
330 Other Professional Services				376,512.25
Total Purchased Professional and Technical Services				\$392,907.92
500 <u>Other Purchased Services</u>				
580 Travel				768.00
Total Other Purchased Services				\$768.00
600 <u>Supplies</u>				
610 General Supplies				16,137.99
Total Supplies				\$16,137.99
Total 2400 Support Services – Pupil Health				\$1,321,075.45

LEA : 123463603 Hatboro-Horsham SD

Printed 1/2/2020 9:53:50 AM

General Fund (10)

2420 Medical Services

<u>Elementary</u>	<u>Secondary</u>	<u>Federal</u>	<u>Total</u>
-------------------	------------------	----------------	--------------

300 Purchased Professional and Technical Services

330 Other Professional Services			376,172.25
---------------------------------	--	--	------------

Total Purchased Professional and Technical Services			\$376,172.25
--	--	--	---------------------

Total 2420 Medical Services			\$376,172.25
------------------------------------	--	--	---------------------

LEA : 123463603 Hatboro-Horsham SD

Printed 1/2/2020 9:53:50 AM

General Fund (10)

2430 Dental Services

	<u>Elementary</u>	<u>Secondary</u>	<u>Federal</u>	<u>Total</u>
300 <u>Purchased Professional and Technical Services</u>				
330 Other Professional Services				340.00
Total Purchased Professional and Technical Services				\$340.00
Total 2430 Dental Services				\$340.00

LEA : 123463603 Hatboro-Horsham SD

Printed 1/2/2020 9:53:50 AM

General Fund (10)

2440 Nursing Services

	<u>Elementary</u>	<u>Secondary</u>	<u>Federal</u>	<u>Total</u>
100 <u>Personnel Services – Salaries</u>				
100 Personnel Services – Salaries				576,511.74
Total Personnel Services – Salaries				\$576,511.74
200 <u>Personnel Services – Employee Benefits</u>				
220 Social Security Contributions				43,491.49
230 PSERS Retirement Contributions				192,805.63
270 Group Insurance – Self-Insurance				70,786.25
Total Personnel Services – Employee Benefits				\$307,083.37
300 <u>Purchased Professional and Technical Services</u>				
329 Professional Educational Services – Other				16,395.67
Total Purchased Professional and Technical Services				\$16,395.67
500 <u>Other Purchased Services</u>				
580 Travel				768.00
Total Other Purchased Services				\$768.00
600 <u>Supplies</u>				
610 General Supplies				16,137.99
Total Supplies				\$16,137.99
Total 2440 Nursing Services				\$916,896.77

LEA : 123463603 Hatboro-Horsham SD

Printed 1/2/2020 9:53:50 AM

General Fund (10)

2450 Nonpublic Health Services	<u>Elementary</u>	<u>Secondary</u>	<u>Federal</u>	<u>Total</u>
100 <u>Personnel Services – Salaries</u>				
100 Personnel Services – Salaries				18,051.29
Total Personnel Services – Salaries				\$18,051.29
200 <u>Personnel Services – Employee Benefits</u>				
220 Social Security Contributions				1,361.77
230 PSERS Retirement Contributions				6,036.97
270 Group Insurance – Self-Insurance				2,216.40
Total Personnel Services – Employee Benefits				\$9,615.14
Total 2450 Nonpublic Health Services				\$27,666.43

LEA : 123463603 Hatboro-Horsham SD

Printed 1/2/2020 9:53:50 AM

General Fund (10)				
2500 Support Services – Business	<u>Elementary</u>	<u>Secondary</u>	<u>Federal</u>	<u>Total</u>
100 <u>Personnel Services – Salaries</u>				
100 Personnel Services – Salaries				700,931.85
Total Personnel Services – Salaries				\$700,931.85
200 <u>Personnel Services – Employee Benefits</u>				
210 Group Insurance – Contracted Provider				5,703.60
220 Social Security Contributions				46,753.01
230 PSERS Retirement Contributions				229,334.68
270 Group Insurance – Self-Insurance				133,271.53
Total Personnel Services – Employee Benefits				\$415,062.82
300 <u>Purchased Professional and Technical Services</u>				
340 Technical Services				57,195.60
Total Purchased Professional and Technical Services				\$57,195.60
400 <u>Purchased Property Services</u>				
430 Repairs and Maintenance Services				457.69
440 Rentals				19,098.00
Total Purchased Property Services				\$19,555.69
500 <u>Other Purchased Services</u>				
530 Communications				33,363.95
549 Other Advertising/Public Relations				3,461.04
580 Travel				7,657.02
Total Other Purchased Services				\$44,482.01
600 <u>Supplies</u>				
610 General Supplies				32,512.70
630 Food				3,698.07
Total Supplies				\$36,210.77
700 <u>Property</u>				
752 Capital Equipment – Original and Additional				7,051.11
762 Capitalized Equipment - Replacement				9,308.84
Total Property				\$16,359.95
800 <u>Other Objects</u>				
810 Dues and Fees				6,699.36
Total Other Objects				\$6,699.36
Total 2500 Support Services – Business				\$1,296,498.05

LEA : 123463603 Hatboro-Horsham SD

Printed 1/2/2020 9:53:50 AM

General Fund (10)				
2510 Fiscal Services	<u>Elementary</u>	<u>Secondary</u>	<u>Federal</u>	<u>Total</u>
100 <u>Personnel Services – Salaries</u>				
100 Personnel Services – Salaries				549,375.35
Total Personnel Services – Salaries				\$549,375.35
200 <u>Personnel Services – Employee Benefits</u>				
210 Group Insurance – Contracted Provider				5,703.60
220 Social Security Contributions				35,220.43
230 PSERS Retirement Contributions				178,663.97
270 Group Insurance – Self-Insurance				105,855.07
Total Personnel Services – Employee Benefits				\$325,443.07
300 <u>Purchased Professional and Technical Services</u>				
340 Technical Services				57,195.60
Total Purchased Professional and Technical Services				\$57,195.60
400 <u>Purchased Property Services</u>				
430 Repairs and Maintenance Services				457.69
440 Rentals				19,098.00
Total Purchased Property Services				\$19,555.69
500 <u>Other Purchased Services</u>				
530 Communications				33,363.95
549 Other Advertising/Public Relations				3,461.04
580 Travel				7,657.02
Total Other Purchased Services				\$44,482.01
600 <u>Supplies</u>				
610 General Supplies				32,512.70
630 Food				3,698.07
Total Supplies				\$36,210.77
700 <u>Property</u>				
752 Capital Equipment – Original and Additional				7,051.11
762 Capitalized Equipment - Replacement				9,308.84
Total Property				\$16,359.95
800 <u>Other Objects</u>				
810 Dues and Fees				5,400.36
Total Other Objects				\$5,400.36
Total 2510 Fiscal Services				\$1,054,022.80

LEA : 123463603 Hatboro-Horsham SD

Printed 1/2/2020 9:53:50 AM

General Fund (10)

2511 Supervision of Fiscal Services - Head of Component

Elementary Secondary Federal Total

100 <u>Personnel Services – Salaries</u>				
100 Personnel Services – Salaries				277,146.89
Total Personnel Services – Salaries				\$277,146.89
200 <u>Personnel Services – Employee Benefits</u>				
210 Group Insurance – Contracted Provider				5,703.60
220 Social Security Contributions				15,564.21
230 PSERS Retirement Contributions				88,965.31
270 Group Insurance – Self-Insurance				37,266.35
Total Personnel Services – Employee Benefits				\$147,499.47
500 <u>Other Purchased Services</u>				
530 Communications				1,843.41
580 Travel				7,657.02
Total Other Purchased Services				\$9,500.43
Total 2511 Supervision of Fiscal Services - Head of Component				\$434,146.79

LEA : 123463603 Hatboro-Horsham SD

Printed 1/2/2020 9:53:50 AM

General Fund (10)

2513 Receiving and Disbursing Funds Services	<u>Elementary</u>	<u>Secondary</u>	<u>Federal</u>	<u>Total</u>
100 <u>Personnel Services – Salaries</u>				
100 Personnel Services – Salaries				53,205.91
Total Personnel Services – Salaries				\$53,205.91
200 <u>Personnel Services – Employee Benefits</u>				
220 Social Security Contributions				3,838.75
230 PSERS Retirement Contributions				17,571.90
270 Group Insurance – Self-Insurance				22,521.24
Total Personnel Services – Employee Benefits				\$43,931.89
Total 2513 Receiving and Disbursing Funds Services				\$97,137.80

LEA : 123463603 Hatboro-Horsham SD

Printed 1/2/2020 9:53:50 AM

General Fund (10)

2514 Payroll Services

	<u>Elementary</u>	<u>Secondary</u>	<u>Federal</u>	<u>Total</u>
100 <u>Personnel Services – Salaries</u>				
100 Personnel Services – Salaries				85,926.51
Total Personnel Services – Salaries				\$85,926.51
200 <u>Personnel Services – Employee Benefits</u>				
220 Social Security Contributions				6,091.04
230 PSERS Retirement Contributions				28,736.25
270 Group Insurance – Self-Insurance				23,725.22
Total Personnel Services – Employee Benefits				\$58,552.51
300 <u>Purchased Professional and Technical Services</u>				
340 Technical Services				41.75
Total Purchased Professional and Technical Services				\$41.75
Total 2514 Payroll Services				\$144,520.77

LEA : 123463603 Hatboro-Horsham SD

Printed 1/2/2020 9:53:50 AM

General Fund (10)

2515 Financial Accounting Services	<u>Elementary</u>	<u>Secondary</u>	<u>Federal</u>	<u>Total</u>
100 <u>Personnel Services – Salaries</u>				
100 Personnel Services – Salaries				123,130.05
Total Personnel Services – Salaries				\$123,130.05
200 <u>Personnel Services – Employee Benefits</u>				
220 Social Security Contributions				9,003.99
230 PSERS Retirement Contributions				40,031.66
270 Group Insurance – Self-Insurance				22,342.26
Total Personnel Services – Employee Benefits				\$71,377.91
300 <u>Purchased Professional and Technical Services</u>				
340 Technical Services				9,301.00
Total Purchased Professional and Technical Services				\$9,301.00
800 <u>Other Objects</u>				
810 Dues and Fees				5,400.36
Total Other Objects				\$5,400.36
Total 2515 Financial Accounting Services				\$209,209.32

LEA : 123463603 Hatboro-Horsham SD

Printed 1/2/2020 9:53:50 AM

General Fund (10)				
2519 Other Fiscal Services	<u>Elementary</u>	<u>Secondary</u>	<u>Federal</u>	<u>Total</u>
100 <u>Personnel Services – Salaries</u>				
100 Personnel Services – Salaries				9,965.99
Total Personnel Services – Salaries				\$9,965.99
200 <u>Personnel Services – Employee Benefits</u>				
220 Social Security Contributions				722.44
230 PSERS Retirement Contributions				3,358.85
Total Personnel Services – Employee Benefits				\$4,081.29
300 <u>Purchased Professional and Technical Services</u>				
340 Technical Services				47,852.85
Total Purchased Professional and Technical Services				\$47,852.85
400 <u>Purchased Property Services</u>				
430 Repairs and Maintenance Services				457.69
440 Rentals				19,098.00
Total Purchased Property Services				\$19,555.69
500 <u>Other Purchased Services</u>				
530 Communications				31,520.54
549 Other Advertising/Public Relations				3,461.04
Total Other Purchased Services				\$34,981.58
600 <u>Supplies</u>				
610 General Supplies				32,512.70
630 Food				3,698.07
Total Supplies				\$36,210.77
700 <u>Property</u>				
752 Capital Equipment – Original and Additional				7,051.11
762 Capitalized Equipment - Replacement				9,308.84
Total Property				\$16,359.95
Total 2519 Other Fiscal Services				\$169,008.12

LEA : 123463603 Hatboro-Horsham SD

Printed 1/2/2020 9:53:50 AM

General Fund (10)

2520 Purchasing Services

Elementary Secondary Federal Total

100 <u>Personnel Services – Salaries</u>				
100 Personnel Services – Salaries				44,363.12
Total Personnel Services – Salaries				\$44,363.12
200 <u>Personnel Services – Employee Benefits</u>				
220 Social Security Contributions				3,585.06
230 PSERS Retirement Contributions				14,830.66
270 Group Insurance – Self-Insurance				3,691.24
Total Personnel Services – Employee Benefits				\$22,106.96
800 <u>Other Objects</u>				
810 Dues and Fees				1,299.00
Total Other Objects				\$1,299.00
Total 2520 Purchasing Services				\$67,769.08

LEA : 123463603 Hatboro-Horsham SD

Printed 1/2/2020 9:53:50 AM

General Fund (10)

2590 Other Support Services – Business	<u>Elementary</u>	<u>Secondary</u>	<u>Federal</u>	<u>Total</u>
100 <u>Personnel Services – Salaries</u>				
100 Personnel Services – Salaries				107,193.38
Total Personnel Services – Salaries				\$107,193.38
200 <u>Personnel Services – Employee Benefits</u>				
220 Social Security Contributions				7,947.52
230 PSERS Retirement Contributions				35,840.05
270 Group Insurance – Self-Insurance				23,725.22
Total Personnel Services – Employee Benefits				\$67,512.79
Total 2590 Other Support Services – Business				\$174,706.17

LEA : 123463603 Hatboro-Horsham SD

Printed 1/2/2020 9:53:50 AM

General Fund (10)				
2600 Operation and Maintenance of Plant Services	<u>Elementary</u>	<u>Secondary</u>	<u>Federal</u>	<u>Total</u>
100 <u>Personnel Services – Salaries</u>				
100 Personnel Services – Salaries				2,845,473.94
Total Personnel Services – Salaries				\$2,845,473.94
200 <u>Personnel Services – Employee Benefits</u>				
220 Social Security Contributions				208,231.86
230 PSERS Retirement Contributions				937,289.67
270 Group Insurance – Self-Insurance				839,278.14
Total Personnel Services – Employee Benefits				\$1,984,799.67
300 <u>Purchased Professional and Technical Services</u>				
329 Professional Educational Services – Other				27,726.94
330 Other Professional Services				1,537.00
340 Technical Services				3,550.00
350 Security / Safety Services				267,473.11
390 Other Purchased Professional and Technical Services				19,277.38
Total Purchased Professional and Technical Services				\$319,564.43
400 <u>Purchased Property Services</u>				
410 Cleaning Services				129,896.44
420 Utility Services				196,914.30
430 Repairs and Maintenance Services				658,092.17
440 Rentals				25,000.00
Total Purchased Property Services				\$1,009,902.91
500 <u>Other Purchased Services</u>				
521 Fire Insurance				113,498.00
523 General Property and Liability Insurance				36,650.00
529 Other Insurance				3,323.00
530 Communications				6,022.65
580 Travel				480.18
591 Services Purchased Locally				40,841.49
Total Other Purchased Services				\$200,815.32
600 <u>Supplies</u>				
610 General Supplies	125,082.94	311,327.88		436,410.82
620 Energy				1,076,699.69
Total Supplies	\$125,082.94	\$311,327.88		\$1,513,110.51
700 <u>Property</u>				
752 Capital Equipment – Original and Additional				3,150.00
762 Capitalized Equipment - Replacement				42,315.99
Total Property				\$45,465.99
800 <u>Other Objects</u>				
810 Dues and Fees				35.00
Total Other Objects				\$35.00
Total 2600 Operation and Maintenance of Plant Services	\$125,082.94	\$311,327.88		\$7,919,167.77

General Fund (10)

2610 Supervision of Operation and Maintenance of Plant Services	<u>Elementary</u>	<u>Secondary</u>	<u>Federal</u>	<u>Total</u>
100 <u>Personnel Services – Salaries</u>				
100 Personnel Services – Salaries				120,272.81
Total Personnel Services – Salaries				\$120,272.81
200 <u>Personnel Services – Employee Benefits</u>				
220 Social Security Contributions				8,724.42
230 PSERS Retirement Contributions				39,070.90
270 Group Insurance – Self-Insurance				24,027.60
Total Personnel Services – Employee Benefits				\$71,822.92
500 <u>Other Purchased Services</u>				
580 Travel				16.47
Total Other Purchased Services				\$16.47
Total 2610 Supervision of Operation and Maintenance of Plant Services				\$192,112.20

LEA : 123463603 Hatboro-Horsham SD

Printed 1/2/2020 9:53:50 AM

General Fund (10)

2619 Supervision of Operation and Maintenance of Plant Services – All Other Supervision	<u>Elementary</u>	<u>Secondary</u>	<u>Federal</u>	<u>Total</u>
100 <u>Personnel Services – Salaries</u>				
100 Personnel Services – Salaries				120,272.81
Total Personnel Services – Salaries				\$120,272.81
200 <u>Personnel Services – Employee Benefits</u>				
220 Social Security Contributions				8,724.42
230 PSERS Retirement Contributions				39,070.90
270 Group Insurance – Self-Insurance				24,027.60
Total Personnel Services – Employee Benefits				\$71,822.92
500 <u>Other Purchased Services</u>				
580 Travel				16.47
Total Other Purchased Services				\$16.47
Total 2619 Supervision of Operation and Maintenance of Plant Services – All Other Supervision				\$192,112.20

LEA : 123463603 Hatboro-Horsham SD

Printed 1/2/2020 9:53:50 AM

General Fund (10)				
2620 Operation of Buildings Services	<u>Elementary</u>	<u>Secondary</u>	<u>Federal</u>	<u>Total</u>
100 <u>Personnel Services – Salaries</u>				
100 Personnel Services – Salaries				2,539,126.66
Total Personnel Services – Salaries				\$2,539,126.66
200 <u>Personnel Services – Employee Benefits</u>				
220 Social Security Contributions				185,985.46
230 PSERS Retirement Contributions				839,347.59
270 Group Insurance – Self-Insurance				770,402.64
Total Personnel Services – Employee Benefits				\$1,795,735.69
300 <u>Purchased Professional and Technical Services</u>				
330 Other Professional Services				1,537.00
340 Technical Services				3,550.00
Total Purchased Professional and Technical Services				\$5,087.00
400 <u>Purchased Property Services</u>				
410 Cleaning Services				129,896.44
420 Utility Services				196,914.30
430 Repairs and Maintenance Services				630,998.49
440 Rentals				25,000.00
Total Purchased Property Services				\$982,809.23
500 <u>Other Purchased Services</u>				
521 Fire Insurance				113,498.00
523 General Property and Liability Insurance				36,650.00
529 Other Insurance				3,323.00
530 Communications				5,657.80
Total Other Purchased Services				\$159,128.80
600 <u>Supplies</u>				
610 General Supplies	120,248.82	300,141.05		420,389.87
620 Energy				1,076,699.69
Total Supplies	\$120,248.82	\$300,141.05		\$1,497,089.56
700 <u>Property</u>				
752 Capital Equipment – Original and Additional				3,150.00
762 Capitalized Equipment - Replacement				42,315.99
Total Property				\$45,465.99
800 <u>Other Objects</u>				
810 Dues and Fees				35.00
Total Other Objects				\$35.00
Total 2620 Operation of Buildings Services	\$120,248.82	\$300,141.05		\$7,024,477.93

LEA : 123463603 Hatboro-Horsham SD

Printed 1/2/2020 9:53:50 AM

General Fund (10)				
2630 Care and Upkeep of Grounds Services	<u>Elementary</u>	<u>Secondary</u>	<u>Federal</u>	<u>Total</u>
100 <u>Personnel Services – Salaries</u>				
100 Personnel Services – Salaries				59,850.32
Total Personnel Services – Salaries				\$59,850.32
200 <u>Personnel Services – Employee Benefits</u>				
220 Social Security Contributions				4,497.60
230 PSERS Retirement Contributions				20,011.08
270 Group Insurance – Self-Insurance				14,746.12
Total Personnel Services – Employee Benefits				\$39,254.80
400 <u>Purchased Property Services</u>				
430 Repairs and Maintenance Services				22,193.68
Total Purchased Property Services				\$22,193.68
600 <u>Supplies</u>				
610 General Supplies	4,620.61	4,620.60		9,241.21
Total Supplies	\$4,620.61	\$4,620.60		\$9,241.21
Total 2630 Care and Upkeep of Grounds Services	\$4,620.61	\$4,620.60		\$130,540.01

LEA : 123463603 Hatboro-Horsham SD

Printed 1/2/2020 9:53:50 AM

General Fund (10)

2660 Safety and Security Services	Elementary	Secondary	Federal	Total
100 <u>Personnel Services – Salaries</u>				
100 Personnel Services – Salaries				84,342.02
Total Personnel Services – Salaries				\$84,342.02
200 <u>Personnel Services – Employee Benefits</u>				
220 Social Security Contributions				5,936.04
230 PSERS Retirement Contributions				26,422.47
270 Group Insurance – Self-Insurance				22,573.68
Total Personnel Services – Employee Benefits				\$54,932.19
300 <u>Purchased Professional and Technical Services</u>				
329 Professional Educational Services – Other				27,726.94
350 Security / Safety Services				267,473.11
390 Other Purchased Professional and Technical Services				19,277.38
Total Purchased Professional and Technical Services				\$314,477.43
400 <u>Purchased Property Services</u>				
430 Repairs and Maintenance Services				4,900.00
Total Purchased Property Services				\$4,900.00
500 <u>Other Purchased Services</u>				
530 Communications				364.85
580 Travel				463.71
591 Services Purchased Locally				40,841.49
Total Other Purchased Services				\$41,670.05
600 <u>Supplies</u>				
610 General Supplies	213.51	6,566.23		6,779.74
Total Supplies	\$213.51	\$6,566.23		\$6,779.74
Total 2660 Safety and Security Services	\$213.51	\$6,566.23		\$507,101.43

LEA : 123463603 Hatboro-Horsham SD

Printed 1/2/2020 9:53:50 AM

General Fund (10)

2690 Other Operation and Maintenance of Plant Services	<u>Elementary</u>	<u>Secondary</u>	<u>Federal</u>	<u>Total</u>
100 <u>Personnel Services – Salaries</u>				
100 Personnel Services – Salaries				41,882.13
Total Personnel Services – Salaries				\$41,882.13
200 <u>Personnel Services – Employee Benefits</u>				
220 Social Security Contributions				3,088.34
230 PSERS Retirement Contributions				12,437.63
270 Group Insurance – Self-Insurance				7,528.10
Total Personnel Services – Employee Benefits				\$23,054.07
Total 2690 Other Operation and Maintenance of Plant Services				\$64,936.20

LEA : 123463603 Hatboro-Horsham SD

Printed 1/2/2020 9:53:50 AM

General Fund (10)				
2700 Student Transportation Services				
	<u>Elementary</u>	<u>Secondary</u>	<u>Federal</u>	<u>Total</u>
100 <u>Personnel Services – Salaries</u>				
100 Personnel Services – Salaries			7,654.73	2,152,375.79
Total Personnel Services – Salaries			\$7,654.73	\$2,152,375.79
200 <u>Personnel Services – Employee Benefits</u>				
220 Social Security Contributions			469.33	161,424.00
230 PSERS Retirement Contributions			1,032.87	698,567.28
270 Group Insurance – Self-Insurance				344,327.07
Total Personnel Services – Employee Benefits			\$1,502.20	\$1,204,318.35
300 <u>Purchased Professional and Technical Services</u>				
340 Technical Services				17,400.00
Total Purchased Professional and Technical Services				\$17,400.00
400 <u>Purchased Property Services</u>				
410 Cleaning Services				12,048.80
420 Utility Services				4,829.54
430 Repairs and Maintenance Services				42,561.13
440 Rentals				1,870.00
Total Purchased Property Services				\$61,309.47
500 <u>Other Purchased Services</u>				
513 Contracted Carriers				643,569.54
516 Student Transportation Services From the IU				1,270,007.38
522 Automotive Liability Insurance				117,070.00
580 Travel				3,261.79
Total Other Purchased Services				\$2,033,908.71
600 <u>Supplies</u>				
610 General Supplies				169,440.75
620 Energy				270,741.00
Total Supplies				\$440,181.75
700 <u>Property</u>				
752 Capital Equipment – Original and Additional				10,171.00
762 Capitalized Equipment - Replacement				15,735.03
Total Property				\$25,906.03
800 <u>Other Objects</u>				
810 Dues and Fees				1,500.00
Total Other Objects				\$1,500.00
Total 2700 Student Transportation Services			\$9,156.93	\$5,936,900.10

LEA : 123463603 Hatboro-Horsham SD

Printed 1/2/2020 9:53:50 AM

General Fund (10)

2710 Supervision of Student Transportation Services	<u>Elementary</u>	<u>Secondary</u>	<u>Federal</u>	<u>Total</u>
100 <u>Personnel Services – Salaries</u>				
100 Personnel Services – Salaries				105,001.79
Total Personnel Services – Salaries				\$105,001.79
200 <u>Personnel Services – Employee Benefits</u>				
220 Social Security Contributions				7,845.80
230 PSERS Retirement Contributions				33,740.49
270 Group Insurance – Self-Insurance				8,302.94
Total Personnel Services – Employee Benefits				\$49,889.23
800 <u>Other Objects</u>				
810 Dues and Fees				1,500.00
Total Other Objects				\$1,500.00
Total 2710 Supervision of Student Transportation Services				\$156,391.02

LEA : 123463603 Hatboro-Horsham SD

Printed 1/2/2020 9:53:50 AM

General Fund (10)

2719 Supervision of Student Transportation Services – All Other Supervision	<u>Elementary</u>	<u>Secondary</u>	<u>Federal</u>	<u>Total</u>
100 <u>Personnel Services – Salaries</u>				
100 Personnel Services – Salaries				105,001.79
Total Personnel Services – Salaries				\$105,001.79
200 <u>Personnel Services – Employee Benefits</u>				
220 Social Security Contributions				7,845.80
230 PSERS Retirement Contributions				33,740.49
270 Group Insurance – Self-Insurance				8,302.94
Total Personnel Services – Employee Benefits				\$49,889.23
800 <u>Other Objects</u>				
810 Dues and Fees				1,500.00
Total Other Objects				\$1,500.00
Total 2719 Supervision of Student Transportation Services – All Other Supervision				\$156,391.02

LEA : 123463603 Hatboro-Horsham SD

Printed 1/2/2020 9:53:50 AM

General Fund (10)				
2720 Vehicle Operation Services				
	<u>Elementary</u>	<u>Secondary</u>	<u>Federal</u>	<u>Total</u>
100 <u>Personnel Services – Salaries</u>				
100 Personnel Services – Salaries			7,654.73	1,365,011.93
Total Personnel Services – Salaries			\$7,654.73	\$1,365,011.93
200 <u>Personnel Services – Employee Benefits</u>				
220 Social Security Contributions			469.33	103,465.09
230 PSERS Retirement Contributions			1,032.87	441,981.41
270 Group Insurance – Self-Insurance				220,770.74
Total Personnel Services – Employee Benefits			\$1,502.20	\$766,217.24
300 <u>Purchased Professional and Technical Services</u>				
340 Technical Services				17,400.00
Total Purchased Professional and Technical Services				\$17,400.00
400 <u>Purchased Property Services</u>				
410 Cleaning Services				10,587.28
420 Utility Services				4,829.54
440 Rentals				1,870.00
Total Purchased Property Services				\$17,286.82
500 <u>Other Purchased Services</u>				
513 Contracted Carriers				475,414.54
516 Student Transportation Services From the IU				1,270,007.38
522 Automotive Liability Insurance				117,070.00
580 Travel				3,261.79
Total Other Purchased Services				\$1,865,753.71
600 <u>Supplies</u>				
610 General Supplies				1,723.04
620 Energy				270,741.00
Total Supplies				\$272,464.04
700 <u>Property</u>				
752 Capital Equipment – Original and Additional				10,171.00
762 Capitalized Equipment - Replacement				15,735.03
Total Property				\$25,906.03
Total 2720 Vehicle Operation Services			\$9,156.93	\$4,330,039.77

General Fund (10)

2740 Vehicle Servicing and Maintenance Services

Elementary Secondary Federal Total

100 <u>Personnel Services – Salaries</u>				
100 Personnel Services – Salaries				246,930.40
Total Personnel Services – Salaries				\$246,930.40
200 <u>Personnel Services – Employee Benefits</u>				
220 Social Security Contributions				18,349.79
230 PSERS Retirement Contributions				82,494.09
270 Group Insurance – Self-Insurance				45,522.81
Total Personnel Services – Employee Benefits				\$146,366.69
400 <u>Purchased Property Services</u>				
430 Repairs and Maintenance Services				42,561.13
Total Purchased Property Services				\$42,561.13
600 <u>Supplies</u>				
610 General Supplies				167,717.71
Total Supplies				\$167,717.71
Total 2740 Vehicle Servicing and Maintenance Services				\$603,575.93

LEA : 123463603 Hatboro-Horsham SD

Printed 1/2/2020 9:53:50 AM

General Fund (10)

2750 Nonpublic Transportation	<u>Elementary</u>	<u>Secondary</u>	<u>Federal</u>	<u>Total</u>
100 <u>Personnel Services – Salaries</u>				
100 Personnel Services – Salaries				333,927.15
Total Personnel Services – Salaries				\$333,927.15
200 <u>Personnel Services – Employee Benefits</u>				
220 Social Security Contributions				25,353.51
230 PSERS Retirement Contributions				111,130.20
270 Group Insurance – Self-Insurance				34,240.19
Total Personnel Services – Employee Benefits				\$170,723.90
500 <u>Other Purchased Services</u>				
513 Contracted Carriers				168,155.00
Total Other Purchased Services				\$168,155.00
Total 2750 Nonpublic Transportation				\$672,806.05

LEA : 123463603 Hatboro-Horsham SD

Printed 1/2/2020 9:53:50 AM

General Fund (10)

2790 Other Student Transportation Services	<u>Elementary</u>	<u>Secondary</u>	<u>Federal</u>	<u>Total</u>
100 <u>Personnel Services – Salaries</u>				
100 Personnel Services – Salaries				101,504.52
Total Personnel Services – Salaries				\$101,504.52
200 <u>Personnel Services – Employee Benefits</u>				
220 Social Security Contributions				6,409.81
230 PSERS Retirement Contributions				29,221.09
270 Group Insurance – Self-Insurance				35,490.39
Total Personnel Services – Employee Benefits				\$71,121.29
400 <u>Purchased Property Services</u>				
410 Cleaning Services				1,461.52
Total Purchased Property Services				\$1,461.52
Total 2790 Other Student Transportation Services				\$174,087.33

LEA : 123463603 Hatboro-Horsham SD

Printed 1/2/2020 9:53:50 AM

General Fund (10)					
2800 Support Services – Central		Elementary	Secondary	Federal	Total
100 Personnel Services – Salaries					
100 Personnel Services – Salaries					1,274,762.77
Total Personnel Services – Salaries					\$1,274,762.77
200 Personnel Services – Employee Benefits					
220 Social Security Contributions					92,048.14
230 PSERS Retirement Contributions					418,419.97
240 Tuition Reimbursement					45,168.38
270 Group Insurance – Self-Insurance					258,531.18
Total Personnel Services – Employee Benefits					\$814,167.67
300 Purchased Professional and Technical Services					
329 Professional Educational Services – Other					990.68
330 Other Professional Services				1,772.00	1,772.00
340 Technical Services					613,247.32
360 Employee Training and Development Services					27,357.65
Total Purchased Professional and Technical Services					\$1,772.00 \$643,367.65
400 Purchased Property Services					
430 Repairs and Maintenance Services					409,567.79
440 Rentals					850,116.34
Total Purchased Property Services					\$1,259,684.13
500 Other Purchased Services					
530 Communications					94,004.03
549 Other Advertising/Public Relations					3,310.18
550 Printing and Binding					17,079.00
580 Travel					35,688.64
Total Other Purchased Services					\$150,081.85
600 Supplies					
610 General Supplies					45,864.61
640 Books and Periodicals					472.17
650 Supplies & Fees – Technology Related					225,546.79
Total Supplies					\$271,883.57
700 Property					
756 Capitalized Technology Equipment – Original					256,367.80
Total Property					\$256,367.80
800 Other Objects					
810 Dues and Fees					1,159.00
Total Other Objects					\$1,159.00
Total 2800 Support Services – Central				\$1,772.00	\$4,671,474.44

LEA : 123463603 Hatboro-Horsham SD

Printed 1/2/2020 9:53:50 AM

General Fund (10)				
2810 Planning, Research, Development and Evaluation Services	<u>Elementary</u>	<u>Secondary</u>	<u>Federal</u>	<u>Total</u>
100 <u>Personnel Services – Salaries</u>				
100 Personnel Services – Salaries				40,477.02
Total Personnel Services – Salaries				\$40,477.02
200 <u>Personnel Services – Employee Benefits</u>				
220 Social Security Contributions				2,636.93
230 PSERS Retirement Contributions				13,560.64
270 Group Insurance – Self-Insurance				2,673.11
Total Personnel Services – Employee Benefits				\$18,870.68
300 <u>Purchased Professional and Technical Services</u>				
340 Technical Services				478,872.85
Total Purchased Professional and Technical Services				\$478,872.85
400 <u>Purchased Property Services</u>				
430 Repairs and Maintenance Services				198,378.80
440 Rentals				850,116.34
Total Purchased Property Services				\$1,048,495.14
500 <u>Other Purchased Services</u>				
530 Communications				94,004.03
580 Travel				1,085.92
Total Other Purchased Services				\$95,089.95
600 <u>Supplies</u>				
610 General Supplies				39,645.16
650 Supplies & Fees – Technology Related				216,887.29
Total Supplies				\$256,532.45
700 <u>Property</u>				
756 Capitalized Technology Equipment – Original				256,367.80
Total Property				\$256,367.80
Total 2810 Planning, Research, Development and Evaluation Services				\$2,194,705.89

LEA : 123463603 Hatboro-Horsham SD

Printed 1/2/2020 9:53:50 AM

General Fund (10)				
2820 Information Services	<u>Elementary</u>	<u>Secondary</u>	<u>Federal</u>	<u>Total</u>
100 <u>Personnel Services – Salaries</u>				
100 Personnel Services – Salaries				87,189.05
Total Personnel Services – Salaries				\$87,189.05
200 <u>Personnel Services – Employee Benefits</u>				
220 Social Security Contributions				6,274.16
230 PSERS Retirement Contributions				29,157.30
270 Group Insurance – Self-Insurance				31,102.76
Total Personnel Services – Employee Benefits				\$66,534.22
300 <u>Purchased Professional and Technical Services</u>				
340 Technical Services				74,817.08
Total Purchased Professional and Technical Services				\$74,817.08
400 <u>Purchased Property Services</u>				
430 Repairs and Maintenance Services				86.42
Total Purchased Property Services				\$86.42
500 <u>Other Purchased Services</u>				
550 Printing and Binding				17,079.00
580 Travel				836.91
Total Other Purchased Services				\$17,915.91
600 <u>Supplies</u>				
610 General Supplies				47.00
650 Supplies & Fees – Technology Related				8,659.50
Total Supplies				\$8,706.50
Total 2820 Information Services				\$255,249.18

LEA : 123463603 Hatboro-Horsham SD

Printed 1/2/2020 9:53:50 AM

General Fund (10)				
2823 Public Information Services	<u>Elementary</u>	<u>Secondary</u>	<u>Federal</u>	<u>Total</u>
100 <u>Personnel Services – Salaries</u>				
100 Personnel Services – Salaries				87,189.05
Total Personnel Services – Salaries				\$87,189.05
200 <u>Personnel Services – Employee Benefits</u>				
220 Social Security Contributions				6,274.16
230 PSERS Retirement Contributions				29,157.30
270 Group Insurance – Self-Insurance				31,102.76
Total Personnel Services – Employee Benefits				\$66,534.22
300 <u>Purchased Professional and Technical Services</u>				
340 Technical Services				74,817.08
Total Purchased Professional and Technical Services				\$74,817.08
400 <u>Purchased Property Services</u>				
430 Repairs and Maintenance Services				86.42
Total Purchased Property Services				\$86.42
500 <u>Other Purchased Services</u>				
550 Printing and Binding				17,079.00
580 Travel				836.91
Total Other Purchased Services				\$17,915.91
600 <u>Supplies</u>				
610 General Supplies				47.00
650 Supplies & Fees – Technology Related				8,659.50
Total Supplies				\$8,706.50
Total 2823 Public Information Services				\$255,249.18

LEA : 123463603 Hatboro-Horsham SD

Printed 1/2/2020 9:53:50 AM

General Fund (10)				
2830 Staff Services				
	<u>Elementary</u>	<u>Secondary</u>	<u>Federal</u>	<u>Total</u>
100 <u>Personnel Services – Salaries</u>				
100 Personnel Services – Salaries				399,713.91
Total Personnel Services – Salaries				\$399,713.91
200 <u>Personnel Services – Employee Benefits</u>				
220 Social Security Contributions				28,885.24
230 PSERS Retirement Contributions				129,776.31
240 Tuition Reimbursement				45,168.38
270 Group Insurance – Self-Insurance				79,618.49
Total Personnel Services – Employee Benefits				\$283,448.42
300 <u>Purchased Professional and Technical Services</u>				
329 Professional Educational Services – Other				990.68
340 Technical Services				3,562.26
360 Employee Training and Development Services				27,357.65
Total Purchased Professional and Technical Services				\$31,910.59
500 <u>Other Purchased Services</u>				
549 Other Advertising/Public Relations				3,310.18
580 Travel				33,765.81
Total Other Purchased Services				\$37,075.99
600 <u>Supplies</u>				
610 General Supplies				6,172.45
640 Books and Periodicals				472.17
Total Supplies				\$6,644.62
800 <u>Other Objects</u>				
810 Dues and Fees				534.00
Total Other Objects				\$534.00
Total 2830 Staff Services				\$759,327.53

LEA : 123463603 Hatboro-Horsham SD

Printed 1/2/2020 9:53:50 AM

General Fund (10)

2832 Recruitment and Placement Services	<u>Elementary</u>	<u>Secondary</u>	<u>Federal</u>	<u>Total</u>
100 <u>Personnel Services – Salaries</u>				
100 Personnel Services – Salaries				188,847.96
Total Personnel Services – Salaries				\$188,847.96
200 <u>Personnel Services – Employee Benefits</u>				
220 Social Security Contributions				13,536.67
230 PSERS Retirement Contributions				61,903.46
270 Group Insurance – Self-Insurance				46,965.67
Total Personnel Services – Employee Benefits				\$122,405.80
300 <u>Purchased Professional and Technical Services</u>				
340 Technical Services				3,562.26
Total Purchased Professional and Technical Services				\$3,562.26
500 <u>Other Purchased Services</u>				
549 Other Advertising/Public Relations				3,310.18
580 Travel				2,393.43
Total Other Purchased Services				\$5,703.61
600 <u>Supplies</u>				
610 General Supplies				1,391.65
Total Supplies				\$1,391.65
800 <u>Other Objects</u>				
810 Dues and Fees				534.00
Total Other Objects				\$534.00
Total 2832 Recruitment and Placement Services				\$322,445.28

LEA : 123463603 Hatboro-Horsham SD

Printed 1/2/2020 9:53:50 AM

General Fund (10)

2833 Staff Accounting Services	<u>Elementary</u>	<u>Secondary</u>	<u>Federal</u>	<u>Total</u>
100 <u>Personnel Services – Salaries</u>				
100 Personnel Services – Salaries				210,865.95
Total Personnel Services – Salaries				\$210,865.95
200 <u>Personnel Services – Employee Benefits</u>				
220 Social Security Contributions				15,348.57
230 PSERS Retirement Contributions				67,872.85
270 Group Insurance – Self-Insurance				32,652.82
Total Personnel Services – Employee Benefits				\$115,874.24
300 <u>Purchased Professional and Technical Services</u>				
329 Professional Educational Services – Other				990.68
Total Purchased Professional and Technical Services				\$990.68
Total 2833 Staff Accounting Services				\$327,730.87

General Fund (10)

2834 Staff Development Services – Non-Instructional, Certified Staff Only	<u>Elementary</u>	<u>Secondary</u>	<u>Federal</u>	<u>Total</u>
200 <u>Personnel Services – Employee Benefits</u>				
240 Tuition Reimbursement				44,393.38
Total Personnel Services – Employee Benefits				\$44,393.38
300 <u>Purchased Professional and Technical Services</u>				
360 Employee Training and Development Services				16,160.52
Total Purchased Professional and Technical Services				\$16,160.52
500 <u>Other Purchased Services</u>				
580 Travel				15,458.07
Total Other Purchased Services				\$15,458.07
600 <u>Supplies</u>				
640 Books and Periodicals				472.17
Total Supplies				\$472.17
Total 2834 Staff Development Services – Non-Instructional, Certified Staff Only				\$76,484.14

LEA : 123463603 Hatboro-Horsham SD

Printed 1/2/2020 9:53:50 AM

General Fund (10)

2836 Staff Development Services – Non-Instructional, Non-Certified Staff Only	<u>Elementary</u>	<u>Secondary</u>	<u>Federal</u>	<u>Total</u>
200 <u>Personnel Services – Employee Benefits</u>				
240 Tuition Reimbursement				775.00
Total Personnel Services – Employee Benefits				\$775.00
300 <u>Purchased Professional and Technical Services</u>				
360 Employee Training and Development Services				11,197.13
Total Purchased Professional and Technical Services				\$11,197.13
500 <u>Other Purchased Services</u>				
580 Travel				15,914.31
Total Other Purchased Services				\$15,914.31
Total 2836 Staff Development Services – Non-Instructional, Non-Certified Staff Only				\$27,886.44

LEA : 123463603 Hatboro-Horsham SD

Printed 1/2/2020 9:53:50 AM

General Fund (10)

2839 Other Staff Services

Elementary

Secondary

Federal

Total

600 Supplies

610 General Supplies

4,780.80

Total Supplies				\$4,780.80
Total 2839 Other Staff Services				\$4,780.80

LEA : 123463603 Hatboro-Horsham SD

Printed 1/2/2020 9:53:50 AM

General Fund (10)

2840 Data Processing Services	<u>Elementary</u>	<u>Secondary</u>	<u>Federal</u>	<u>Total</u>
100 <u>Personnel Services – Salaries</u>				
100 Personnel Services – Salaries				747,382.79
Total Personnel Services – Salaries				\$747,382.79
200 <u>Personnel Services – Employee Benefits</u>				
220 Social Security Contributions				54,251.81
230 PSERS Retirement Contributions				245,925.72
270 Group Insurance – Self-Insurance				145,136.82
Total Personnel Services – Employee Benefits				\$445,314.35
300 <u>Purchased Professional and Technical Services</u>				
340 Technical Services				55,995.13
Total Purchased Professional and Technical Services				\$55,995.13
400 <u>Purchased Property Services</u>				
430 Repairs and Maintenance Services				211,102.57
Total Purchased Property Services				\$211,102.57
800 <u>Other Objects</u>				
810 Dues and Fees				625.00
Total Other Objects				\$625.00
Total 2840 Data Processing Services				\$1,460,419.84

LEA : 123463603 Hatboro-Horsham SD

Printed 1/2/2020 9:53:50 AM

General Fund (10)

2890 Other Support Services Central	<u>Elementary</u>	<u>Secondary</u>	<u>Federal</u>	<u>Total</u>
300 <u>Purchased Professional and Technical Services</u>				
330 Other Professional Services			1,772.00	1,772.00
Total Purchased Professional and Technical Services			\$1,772.00	\$1,772.00
Total 2890 Other Support Services Central			\$1,772.00	\$1,772.00

LEA : 123463603 Hatboro-Horsham SD

Printed 1/2/2020 9:53:50 AM

General Fund (10)

2900 Other Support Services	<u>Elementary</u>	<u>Secondary</u>	<u>Federal</u>	<u>Total</u>
500 <u>Other Purchased Services</u>				
595 IU Payments By Withholding				74,410.81
Total Other Purchased Services				\$74,410.81
Total 2900 Other Support Services				\$74,410.81

LEA : 123463603 Hatboro-Horsham SD

Printed 1/2/2020 9:53:50 AM

General Fund (10)

2910 Support Services Not Listed Elsewhere In the 2000 Series

<u>Elementary</u>	<u>Secondary</u>	<u>Federal</u>	<u>Total</u>
-------------------	------------------	----------------	--------------

500 Other Purchased Services

595 IU Payments By Withholding			74,410.81
--------------------------------	--	--	-----------

Total Other Purchased Services			\$74,410.81
---------------------------------------	--	--	--------------------

Total 2910 Support Services Not Listed Elsewhere In the 2000 Series			\$74,410.81
--	--	--	--------------------

LEA : 123463603 Hatboro-Horsham SD

Printed 1/2/2020 9:53:58 AM

General Fund (10)

3000 Operation of Non-Instructional Services		<u>Total</u>
100 <u>Personnel Services – Salaries</u>		
100 Personnel Services – Salaries		770,835.85
Total Personnel Services – Salaries		\$770,835.85
200 <u>Personnel Services – Employee Benefits</u>		
220 Social Security Contributions		59,034.88
230 PSERS Retirement Contributions		252,533.56
270 Group Insurance – Self-Insurance		62,901.20
Total Personnel Services – Employee Benefits		\$374,469.64
300 <u>Purchased Professional and Technical Services</u>		
329 Professional Educational Services – Other		14,726.60
330 Other Professional Services		91,466.00
Total Purchased Professional and Technical Services		\$106,192.60
400 <u>Purchased Property Services</u>		
440 Rentals		5,296.26
Total Purchased Property Services		\$5,296.26
500 <u>Other Purchased Services</u>		
520 Insurance – General		13,626.40
550 Printing and Binding		6,050.00
580 Travel		7.70
591 Services Purchased Locally		58,732.50
Total Other Purchased Services		\$78,416.60
600 <u>Supplies</u>		
610 General Supplies		105,565.88
630 Food		1,974.51
Total Supplies		\$107,540.39
700 <u>Property</u>		
762 Capitalized Equipment - Replacement		26,151.46
Total Property		\$26,151.46
800 <u>Other Objects</u>		
810 Dues and Fees		59,125.42
Total Other Objects		\$59,125.42
Total 3000 Operation of Non-Instructional Services		\$1,528,028.22

LEA : 123463603 Hatboro-Horsham SD

Printed 1/2/2020 9:53:58 AM

General Fund (10)					
3200 Student Activities		Elementary	Secondary	Federal	Total
100	<u>Personnel Services – Salaries</u>				
100	Personnel Services – Salaries				690,349.56
Total Personnel Services – Salaries					\$690,349.56
200	<u>Personnel Services – Employee Benefits</u>				
220	Social Security Contributions				54,914.60
230	PSERS Retirement Contributions				238,920.92
270	Group Insurance – Self-Insurance				54,627.60
Total Personnel Services – Employee Benefits					\$348,463.12
300	<u>Purchased Professional and Technical Services</u>				
329	Professional Educational Services – Other				14,726.60
330	Other Professional Services				91,466.00
Total Purchased Professional and Technical Services					\$106,192.60
400	<u>Purchased Property Services</u>				
440	Rentals				5,296.26
Total Purchased Property Services					\$5,296.26
500	<u>Other Purchased Services</u>				
520	Insurance – General				13,626.40
550	Printing and Binding				6,050.00
580	Travel				7.70
591	Services Purchased Locally				58,732.50
Total Other Purchased Services					\$78,416.60
600	<u>Supplies</u>				
610	General Supplies				105,565.88
630	Food				442.48
Total Supplies					\$106,008.36
700	<u>Property</u>				
762	Capitalized Equipment - Replacement				26,151.46
Total Property					\$26,151.46
800	<u>Other Objects</u>				
810	Dues and Fees				59,125.42
Total Other Objects					\$59,125.42
Total 3200 Student Activities					\$1,420,003.38

LEA : 123463603 Hatboro-Horsham SD

Printed 1/2/2020 9:53:58 AM

General Fund (10)

3300 Community Services

	<u>Elementary</u>	<u>Secondary</u>	<u>Federal</u>	<u>Total</u>
100 <u>Personnel Services – Salaries</u>				
100 Personnel Services – Salaries				80,486.29
Total Personnel Services – Salaries				\$80,486.29
200 <u>Personnel Services – Employee Benefits</u>				
220 Social Security Contributions				4,120.28
230 PSERS Retirement Contributions				13,612.64
270 Group Insurance – Self-Insurance				8,273.60
Total Personnel Services – Employee Benefits				\$26,006.52
600 <u>Supplies</u>				
630 Food			1,532.03	1,532.03
Total Supplies			\$1,532.03	\$1,532.03
Total 3300 Community Services			\$1,532.03	\$108,024.84

General Fund (10)

4000 Facilities Acquisition, Construction and Improvement Services		<u>Total</u>
700 <u>Property</u>		
762 Capitalized Equipment - Replacement		20,868.42
Total Property		\$20,868.42
Total 4000 Facilities Acquisition, Construction and Improvement Services		\$20,868.42

LEA : 123463603 Hatboro-Horsham SD

Printed 1/2/2020 9:54:03 AM

General Fund (10)

4200 Existing Site Improvement Services	<u>Elementary</u>	<u>Secondary</u>	<u>Federal</u>	<u>Total</u>
700 <u>Property</u>				
762 Capitalized Equipment - Replacement				20,868.42
Total Property				\$20,868.42
Total 4200 Existing Site Improvement Services				\$20,868.42

LEA : 123463603 Hatboro-Horsham SD

Printed 1/2/2020 9:54:08 AM

General Fund (10)

5000 Other Expenditures and Financing Uses		<u>Total</u>
800 <u>Other Objects</u>		
830 Interest		2,219,948.00
880 Refunds of Prior Years' Receipts		405,131.00
Total Other Objects		\$2,625,079.00
900 <u>Other Uses of Funds</u>		
910 Redemption of Principal		3,680,000.00
932 Capital Reserve Fund Transfers Applicable To Fund 32		2,300,000.00
939 Other Fund Transfers		2,600,000.00
Total Other Uses of Funds		\$8,580,000.00
Total 5000 Other Expenditures and Financing Uses		\$11,205,079.00

LEA : 123463603 Hatboro-Horsham SD

Printed 1/2/2020 9:54:08 AM

General Fund (10)

5100 Debt Service / Other Expenditures and Financing Uses	<u>Elementary</u>	<u>Secondary</u>	<u>Federal</u>	<u>Total</u>
800 <u>Other Objects</u>				
830 Interest				2,219,948.00
880 Refunds of Prior Years' Receipts				405,131.00
Total Other Objects				\$2,625,079.00
900 <u>Other Uses of Funds</u>				
910 Redemption of Principal				3,680,000.00
Total Other Uses of Funds				\$3,680,000.00
Total 5100 Debt Service / Other Expenditures and Financing Uses				\$6,305,079.00

LEA : 123463603 Hatboro-Horsham SD

Printed 1/2/2020 9:54:08 AM

General Fund (10)

5110 Debt Service	<u>Elementary</u>	<u>Secondary</u>	<u>Federal</u>	<u>Total</u>
800 <u>Other Objects</u>				
830 Interest				2,219,948.00
Total Other Objects				\$2,219,948.00
900 <u>Other Uses of Funds</u>				
910 Redemption of Principal				3,680,000.00
Total Other Uses of Funds				\$3,680,000.00
Total 5110 Debt Service				\$5,899,948.00

LEA : 123463603 Hatboro-Horsham SD

Printed 1/2/2020 9:54:08 AM

General Fund (10)

5130 Refund of Prior Year Revenues / Receipts	<u>Elementary</u>	<u>Secondary</u>	<u>Federal</u>	<u>Total</u>
800 <u>Other Objects</u>				
880 Refunds of Prior Years' Receipts				405,131.00
Total Other Objects				\$405,131.00
Total 5130 Refund of Prior Year Revenues / Receipts				\$405,131.00

LEA : 123463603 Hatboro-Horsham SD

Printed 1/2/2020 9:54:08 AM

General Fund (10)

5200 Interfund Transfers – Out	<u>Elementary</u>	<u>Secondary</u>	<u>Federal</u>	<u>Total</u>
900 <u>Other Uses of Funds</u>				
932 Capital Reserve Fund Transfers Applicable To Fund 32				2,300,000.00
939 Other Fund Transfers				2,600,000.00
Total Other Uses of Funds				\$4,900,000.00
Total 5200 Interfund Transfers – Out				\$4,900,000.00

LEA : 123463603 Hatboro-Horsham SD

Printed 1/2/2020 9:54:08 AM

General Fund (10)

5230 Capital Projects Fund Transfers	<u>Elementary</u>	<u>Secondary</u>	<u>Federal</u>	<u>Total</u>
900 <u>Other Uses of Funds</u>				
932 Capital Reserve Fund Transfers Applicable To Fund 32				2,300,000.00
Total Other Uses of Funds				\$2,300,000.00
Total 5230 Capital Projects Fund Transfers				\$2,300,000.00

LEA : 123463603 Hatboro-Horsham SD

Printed 1/2/2020 9:54:08 AM

General Fund (10)

5240 Debt Service Fund Transfers	<u>Elementary</u>	<u>Secondary</u>	<u>Federal</u>	<u>Total</u>
900 <u>Other Uses of Funds</u>				
939 Other Fund Transfers				2,600,000.00
Total Other Uses of Funds				\$2,600,000.00
Total 5240 Debt Service Fund Transfers				\$2,600,000.00

LEA : 123463603 Hatboro-Horsham SD

Printed 1/2/2020 9:53:55 AM

Capital Reserve Fund - § 1431 (32)

2000 Support Services

Total

700 <u>Property</u>	
762 Capitalized Equipment - Replacement	1,965,652.00
Total Property	\$1,965,652.00
Total 2000 Support Services	\$1,965,652.00

LEA : 123463603 Hatboro-Horsham SD

Printed 1/2/2020 9:53:55 AM

Capital Reserve Fund - § 1431 (32)

2600 Operation and Maintenance of Plant Services

Elementary

Secondary

Federal

Total

700 Property

762 Capitalized Equipment - Replacement

1,965,652.00

Total Property				\$1,965,652.00
Total 2600 Operation and Maintenance of Plant Services				\$1,965,652.00

LEA : 123463603 Hatboro-Horsham SD

Printed 1/2/2020 9:53:55 AM

Capital Reserve Fund - § 1431 (32)				
2620 Operation of Buildings Services	<u>Elementary</u>	<u>Secondary</u>	<u>Federal</u>	<u>Total</u>
700 <u>Property</u>				
762 Capitalized Equipment - Replacement				1,965,652.00
Total Property				\$1,965,652.00
Total 2620 Operation of Buildings Services				\$1,965,652.00

LEA : 123463603 Hatboro-Horsham SD

Printed 1/2/2020 9:54:04 AM

Capital Reserve Fund - § 1431 (32)

4000 Facilities Acquisition, Construction and Improvement Services

Total

700 <u>Property</u>	
762 Capitalized Equipment - Replacement	1,950,295.00
Total Property	\$1,950,295.00
Total 4000 Facilities Acquisition, Construction and Improvement Services	\$1,950,295.00

LEA : 123463603 Hatboro-Horsham SD

Printed 1/2/2020 9:54:04 AM

Capital Reserve Fund - § 1431 (32)

4600 Existing Building Improvement Services	<u>Elementary</u>	<u>Secondary</u>	<u>Federal</u>	<u>Total</u>
700 <u>Property</u>				
762 Capitalized Equipment - Replacement				1,950,295.00
Total Property				\$1,950,295.00
Total 4600 Existing Building Improvement Services				\$1,950,295.00

LEA : 123463603 Hatboro-Horsham SD

Printed 1/2/2020 9:54:06 AM

Other Capital Projects Fund (39)

4000 Facilities Acquisition, Construction and Improvement Services

Total

700 <u>Property</u>	
790 Other Property	17,592,952.00
Total Property	\$17,592,952.00
Total 4000 Facilities Acquisition, Construction and Improvement Services	\$17,592,952.00

LEA : 123463603 Hatboro-Horsham SD

Printed 1/2/2020 9:54:06 AM

Other Capital Projects Fund (39)

4100 Site Acquisition Services – Original and Additional

Elementary

Secondary

Federal

Total

700 Property

790 Other Property

17,592,952.00

Total Property				\$17,592,952.00
Total 4100 Site Acquisition Services – Original and Additional				\$17,592,952.00

LEA : 123463603 Hatboro-Horsham SD

Printed 1/2/2020 9:54:20 AM

	<u>General Fund(10)</u>	<u>Public Purpose Trust(27)</u>	<u>Other Compt Approved (28)</u>	<u>Athletic / Activity(29)</u>	<u>Capital Reserve (690. 1850)(31)</u>
1000 <u>Instruction</u>					
1100 Regular Programs - Elementary / Secondary	39,655,780.73				
1200 Special Programs - Elementary / Secondary	15,309,412.78				
1300 Vocational Education	2,496,573.14				
1400 Other Instructional Programs - Elementary / Secondary	189,636.81				
1500 Nonpublic School Programs	2,397.88				
Total Instruction	\$57,653,801.34				
2000 <u>Support Services</u>					
2100 Support Services - Students	3,908,757.38				
2200 Support Services - Instructional Staff	2,767,882.38				
2300 Support Services - Administration	6,035,304.33				
2400 Support Services - Pupil Health	1,321,075.45				
2500 Support Services - Business	1,296,498.05				
2600 Operation and Maintenance of Plant Services	7,919,167.77				
2700 Student Transportation Services	5,936,900.10				
2800 Support Services - Central	4,671,474.44				
2900 Other Support Services	74,410.81				
Total Support Services	\$33,931,470.71				
3000 <u>Operation of Non-Instructional Services</u>					
3200 Student Activities	1,420,003.38				
3300 Community Services	108,024.84				
Total Operation of Non-Instructional Services	\$1,528,028.22				
4000 <u>Facilities Acquisition, Construction and Improvement Services</u>					
4100 Site Acquisition Services - Original and Additional					
4200 Existing Site Improvement Services	20,868.42				
4600 Existing Building Improvement Services					
Total Facilities Acquisition, Construction and Improvement Services	\$20,868.42				
5000 <u>Other Expenditures and Financing Uses</u>					
5100 Debt Service / Other Expenditures and Financing Uses	6,305,079.00				
5200 Interfund Transfers - Out	4,900,000.00				
Total Other Expenditures and Financing Uses	\$11,205,079.00				
TOTAL ACTUAL EXPENDITURES & OTHER FINANCING USES	\$104,339,247.69				

LEA : 123463603 Hatboro-Horsham SD

Printed 1/2/2020 9:54:20 AM

	<u>Capital Reserve (1431)(32)</u>	<u>Other Capital Projects Fund(39)</u>	<u>Debt Service(40)</u>	<u>Permanent(90)</u>	<u>Total</u>
1000 <u>Instruction</u>					
1100 Regular Programs - Elementary / Secondary					39,655,780.73
1200 Special Programs - Elementary / Secondary					15,309,412.78
1300 Vocational Education					2,496,573.14
1400 Other Instructional Programs - Elementary / Secondary					189,636.81
1500 Nonpublic School Programs					2,397.88
Total Instruction					\$57,653,801.34
2000 <u>Support Services</u>					
2100 Support Services - Students					3,908,757.38
2200 Support Services - Instructional Staff					2,767,882.38
2300 Support Services - Administration					6,035,304.33
2400 Support Services - Pupil Health					1,321,075.45
2500 Support Services - Business					1,296,498.05
2600 Operation and Maintenance of Plant Services	1,965,652.00				9,884,819.77
2700 Student Transportation Services					5,936,900.10
2800 Support Services - Central					4,671,474.44
2900 Other Support Services					74,410.81
Total Support Services	\$1,965,652.00				\$35,897,122.71
3000 <u>Operation of Non-Instructional Services</u>					
3200 Student Activities					1,420,003.38
3300 Community Services					108,024.84
Total Operation of Non-Instructional Services					\$1,528,028.22
4000 <u>Facilities Acquisition, Construction and Improvement Services</u>					
4100 Site Acquisition Services - Original and Additional		17,592,952.00			17,592,952.00
4200 Existing Site Improvement Services					20,868.42
4600 Existing Building Improvement Services	1,950,295.00				1,950,295.00
Total Facilities Acquisition, Construction and Improvement Services	\$1,950,295.00	\$17,592,952.00			\$19,564,115.42
5000 <u>Other Expenditures and Financing Uses</u>					
5100 Debt Service / Other Expenditures and Financing Uses					6,305,079.00
5200 Interfund Transfers - Out					4,900,000.00
Total Other Expenditures and Financing Uses					\$11,205,079.00
TOTAL ACTUAL EXPENDITURES & OTHER FINANCING USES	\$3,915,947.00	\$17,592,952.00			\$125,848,146.69

LEA : 123463603 Hatboro-Horsham SD

Printed 1/2/2020 9:54:27 AM

PSERS Salary Data (Salary Data should relate to the General Fund only)

Amount	Description	Amount
	Total Salary Base for salaries subject to PSERS withholding	45,469,813.52
	Total Federally Funded salaries subject to PSERS withholding	723,853.46

Title I Expenditure Data

Amount	Description	Amount
	Expenditures Funded with Current Title I Funds	224,930.32
	Expenditures Funded with Carry over Title I Funds	168,594.81
Total Title I Expenditure Data		\$393,525.13

Benefits for Staff Relative to Collective Bargaining Agreements

	OBJECT	COVERED	NOT COVERED	TOTAL
10 General Fund				
	211 Medical Insurance	128,992.52		128,992.52
	212 Dental Insurance			
	215 Eye Care Insurance			
	216 Prescription Insurance			
	271 Self-Insurance Medical Benefits	2,904,355.50	1,827,034.24	4,731,389.74
	272 Self-Insurance Dental Benefits	271,367.79	197,333.86	468,701.65
	275 Self-Insurance Eye Care Benefits			
	276 Self-Insurance Prescription Benefits	1,572,540.73	1,002,417.71	2,574,958.44
	FUND TOTAL	\$4,877,256.54	\$3,026,785.81	\$7,904,042.35
50 Enterprise Fund				
	211 Medical Insurance			
	212 Dental Insurance			
	215 Eye Care Insurance			
	216 Prescription Insurance			
	271 Self-Insurance Medical Benefits		272,612.82	272,612.82
	272 Self-Insurance Dental Benefits		22,569.80	22,569.80
	275 Self-Insurance Eye Care Benefits			
	276 Self-Insurance Prescription Benefits		95,037.64	95,037.64
	FUND TOTAL		\$390,220.26	\$390,220.26
60 Internal Service Fund	No Self Insurance data to report			
	211 Medical Insurance			
	212 Dental Insurance			
	215 Eye Care Insurance			
	216 Prescription Insurance			
	271 Self-Insurance Medical Benefits			
	272 Self-Insurance Dental Benefits			
	275 Self-Insurance Eye Care Benefits			
	276 Self-Insurance Prescription Benefits			
	FUND TOTAL			
Total of All Funds		\$4,877,256.54	\$3,417,006.07	\$8,294,262.61

LEA : 123463603 Hatboro-Horsham SD

Printed 1/2/2020 9:54:32 AM

Function	Special Education (Prior Year)	Nonspecial Education (Prior Year)	Total (Prior Year)	Special Education (Current Year)	Nonspecial Education (Current Year)	Total (Current Year)
2120 Guidance Services	408,634.97	1,866,882.15	2,275,517.12	421,116.19	1,951,760.04	2,372,876.23
2140 Psychological Services	148,490.86	678,392.58	826,883.44	201,993.93	936,187.45	1,138,181.38
2150 Speech Pathology and Audiology Services						
2160 Social Work Services	20,177.50	92,182.53	112,360.03	21,809.33	101,080.36	122,889.69
2260 Instruction and Curriculum Development Services	906,612.15	676,913.93	1,583,526.08	807,989.00	495,381.79	1,303,370.79
2350 Legal and Accounting Services	26,583.10	103,444.54	130,027.64	44,389.55	107,348.22	151,737.77
2420 Medical Services						
2440 Nursing Services	162,846.93	743,979.45	906,826.38	162,722.38	754,174.38	916,896.76
2700 Student Transportation Services	1,887,039.20	3,714,513.70	5,601,552.90	2,047,726.07	3,889,174.03	5,936,900.10
Total	\$3,560,384.71	\$7,876,308.88	\$11,436,693.59	\$3,707,746.45	\$8,235,106.27	\$11,942,852.72

LEA : 123463603 Hatboro-Horsham SD

Printed 1/2/2020 9:54:35 AM

(PRINCIPAL AMOUNTS ONLY)								
<u>GOVERNMENTAL FUNDS/ ACTIVITIES</u>	Short-Term Borrowing	General Obligation Bonds/Notes	Authority Building Obligations	Other Long-Term Debt	Other Post- Employment Benefits (OPEB)	Compensated Absences	Net Pension Liability	Total
1. Debt at Beginning of Fiscal Year		61,805,000.00			13,815,493.00	2,363,200.00	167,279,000.00	245,262,693.00
2. Additional Debt Incurred During Year		9,620,000.00				165,000.00		9,785,000.00
3. Retirements and Repayments		3,680,000.00			1,376,378.00	255,075.00	1,422,000.00	6,733,453.00
4. Debt at End of Fiscal Year		67,745,000.00			12,439,115.00	2,273,125.00	165,857,000.00	248,314,240.00
5. Accreted Interest at End Of Fiscal Year								
6. Total Debt and Accreted Interest		67,745,000.00			12,439,115.00	2,273,125.00	165,857,000.00	248,314,240.00
7. Current Portion P&I - Due within 1 year		3,440,000.00						3,440,000.00
8. Interest Paid during current fiscal year		2,219,947.15						2,219,947.15

(PRINCIPAL AMOUNTS ONLY)								
<u>PROPRIETARY FUNDS</u>	Short-Term Borrowing	General Obligation Bonds/Notes	Authority Building Obligations	Other Long-Term Debt	Other Post- Employment Benefits (OPEB)	Compensated Absences	Net Pension Liability	Total
1. Debt at Beginning of Fiscal Year					526,300.00	120,650.00	5,295,000.00	5,941,950.00
2. Additional Debt Incurred During Year						12,350.00		12,350.00
3. Retirements and Repayments					78,400.00	33,650.00	45,000.00	157,050.00
4. Debt at End of Fiscal Year					447,900.00	99,350.00	5,250,000.00	5,797,250.00
5. Accreted Interest at End Of Fiscal Year								
6. Total Debt and Accreted Interest					447,900.00	99,350.00	5,250,000.00	5,797,250.00
7. Current Portion P&I - Due within 1 year								
8. Interest Paid during current fiscal year								

LEA : 123463603 Hatboro-Horsham SD

Total Principal and Interest Payments Made by Your School - All Funds

Function	Fund		Principal (910)	Principal (920)	Interest (830)	Total (Principal +Interest)	Misc Other Uses (990)
5110	10	General Fund	3,680,000.00		2,219,948.00	5,899,948.00	
5110	20	Special Revenue Funds					
5110	30	Capital Projects Funds					
5110	40	Debt Service Fund					
5110	90	Permanent Fund					
5120	10	General Fund					
5120	20	Special Revenue Funds					
5120	30	Capital Projects Funds					
5120	40	Debt Service Fund					
Total Debt Payments - Governmental Funds			\$3,680,000.00		\$2,219,948.00	\$5,899,948.00	

Function	Fund		Principal (910)	Principal (920)	Interest (830)	Total (Principal +Interest)
5110	50	Enterprise Fund				
5110	60	Internal Service Fund				
5120	50	Enterprise Fund				
5120	60	Internal Service Fund				
Total Debt Payments - Proprietary Funds						

LEA : 123463603 Hatboro-Horsham SD

Printed 1/2/2020 9:54:35 AM

Debt Details
Governmental Funds/ Activities

Debt Category	Debt Issue Date (MM/YYYY)	Principal Amounts Only				Current Portion Due Within One Year (Principal and Interest)	Interest Paid During Fiscal Year
		Debt at Beginning of Fiscal Year	Additions	Reductions / Repayments	Debt at End of Fiscal Year		
General Obligation Bonds/Notes – CIB	03/2018	16,550,000.00		990,000.00	15,560,000.00	430,000.00	648,497.15
General Obligation Bonds/Notes – CIB	11/2017	9,460,000.00		180,000.00	9,280,000.00	185,000.00	264,430.00
General Obligation Bonds/Notes – CIB	12/2014	18,135,000.00		5,000.00	18,130,000.00	5,000.00	885,200.00
General Obligation Bonds/Notes – CIB	2/2019		9,620,000.00		9,620,000.00	260,000.00	
General Obligation Bonds/Notes – CIB	9/2015	9,990,000.00		5,000.00	9,985,000.00	5,000.00	293,420.00
General Obligation Bonds/Notes – CIB	7/2012	7,670,000.00		2,500,000.00	5,170,000.00	2,555,000.00	128,400.00
Compensated Absences		2,363,200.00	165,000.00	255,075.00	2,273,125.00		
Other Post-Employment Benefits (OPEB)		13,815,493.00		1,376,378.00	12,439,115.00		
Net Pension Liability		167,279,000.00		1,422,000.00	165,857,000.00		
Totals for Debt Entered:		\$245,262,693.00	\$9,785,000.00	\$6,733,453.00	\$248,314,240.00	\$3,440,000.00	\$2,219,947.15

Bond Details
Proprietary Funds

Debt Category	Debt Issue Date (MM/YYYY)	Principal Amounts Only				Current Portion Due Within One Year (Principal and Interest)	Interest Paid During Fiscal Year
		Debt at Beginning of Fiscal Year	Additions	Reductions / Repayments	Debt at End of Fiscal Year		
Compensated Absences		120,650.00	12,350.00	33,650.00	99,350.00		
Other Post-Employment Benefits (OPEB)		526,300.00		78,400.00	447,900.00		
Net Pension Liability		5,295,000.00		45,000.00	5,250,000.00		
Totals for Debt Entered:		\$5,941,950.00	\$12,350.00	\$157,050.00	\$5,797,250.00		

LEA : 123463603 Hatboro-Horsham SD

Printed 1/2/2020 9:54:38 AM

General Fund (10)

Section 1: Tuition/Purchased Services as Reported within Expenditure Detail	Amount
Tuition Reported in General Fund Expenditures 1000-560	3,782,022.46
Purchased Services in General Fund Expenditures 1000-594 and 1000-597	3,063.70
Section 1 Total	\$3,785,086.16

Section 2: Tuition Paid to Institution Types During Fiscal Year	Tuition Paid For Nonspecial Education	Tuition Paid For Special Education	Total
1 1306 Institutions			
2 Institutionalized Children's Programs		3,063.70	3,063.70
3 Juveniles Incarcerated in Adult Facilities			
4 Residential Treatment Facilities	10,809.68	430,523.01	441,332.69
5 Other Local Education Agencies	34,940.63		34,940.63
6 Brick and Mortar Charter Schools	74,724.98		74,724.98
7 Cyber Charter Schools	279,957.57	383,616.91	663,574.48
8 Career and Technology Centers	757,081.65	407,659.35	1,164,741.00
9 Approved Private Schools		114,609.84	114,609.84
10 PA Chartered Schools for the Deaf and Blind		63,340.00	63,340.00
11 Private Residential Rehabilitative Institutions	14,996.13	360.00	15,356.13
12 Juvenile Detention Centers		31,888.00	31,888.00
13 Special Program Jointures			
14 Other Tuition Not Included Elsewhere In This Section	274.07	1,177,240.64	1,177,514.71
Section 2 Total	\$1,172,784.71	\$2,612,301.45	\$3,785,086.16

1 .	<u>Student Transportation Services for Educational Field Trips</u>	36,988.56
2 .	<u>Student Transportation Services for Student Activities</u>	62,838.27
3 .	<u>Rental of Vehicles for Student Transportation Services</u>	
4 .	<u>Capital Reserve Funds</u>	

Include only district-owned transportation expenditures paid from State or local money.
DO NOT include federal expenditures or payments to contract service providers.
Contracted transportation services should not be recorded on this schedule.

LEA : 123463603 Hatboro-Horsham SD

Printed 1/2/2020 9:54:44 AM

Food Service / Cafeteria Operations Fund (51)

3000 Operation of Non-Instructional Services		<u>Total</u>
100 <u>Personnel Services – Salaries</u>		
100 Personnel Services – Salaries		652,211.00
Total Personnel Services – Salaries		\$652,211.00
200 <u>Personnel Services – Employee Benefits</u>		
220 Social Security Contributions		48,205.87
230 PSERS Retirement Contributions		220,699.11
270 Group Insurance – Self-Insurance		239,025.97
280 Other Post-Employment Benefits (OPEB)		28,000.00
Total Personnel Services – Employee Benefits		\$535,930.95
300 <u>Purchased Professional and Technical Services</u>		
300 Purchased Professional and Technical Services		21,112.00
Total Purchased Professional and Technical Services		\$21,112.00
400 <u>Purchased Property Services</u>		
490 Other Purchased Property Services		15,524.00
Total Purchased Property Services		\$15,524.00
500 <u>Other Purchased Services</u>		
599 Other Miscellaneous Purchased Services		872,638.00
Total Other Purchased Services		\$872,638.00
Total 3000 Operation of Non-Instructional Services		\$2,097,415.95

LEA : 123463603 Hatboro-Horsham SD

Printed 1/2/2020 9:54:44 AM

Food Service / Cafeteria Operations Fund (51)

3100 Food Services	<u>Elementary</u>	<u>Secondary</u>	<u>Federal</u>	<u>Total</u>
100 <u>Personnel Services – Salaries</u>				
100 Personnel Services – Salaries				652,211.00
Total Personnel Services – Salaries				\$652,211.00
200 <u>Personnel Services – Employee Benefits</u>				
220 Social Security Contributions				48,205.87
230 PSERS Retirement Contributions				220,699.11
270 Group Insurance – Self-Insurance				239,025.97
280 Other Post-Employment Benefits (OPEB)				28,000.00
Total Personnel Services – Employee Benefits				\$535,930.95
300 <u>Purchased Professional and Technical Services</u>				
300 Purchased Professional and Technical Services				21,112.00
Total Purchased Professional and Technical Services				\$21,112.00
400 <u>Purchased Property Services</u>				
490 Other Purchased Property Services				15,524.00
Total Purchased Property Services				\$15,524.00
500 <u>Other Purchased Services</u>				
599 Other Miscellaneous Purchased Services				872,638.00
Total Other Purchased Services				\$872,638.00
Total 3100 Food Services				\$2,097,415.95

LEA : 123463603 Hatboro-Horsham SD

Printed 1/2/2020 9:54:46 AM

Child Care Operations Fund (52)

3000 Operation of Non-Instructional Services		<u>Total</u>
100 <u>Personnel Services – Salaries</u>		
100 Personnel Services – Salaries		1,320,583.00
Total Personnel Services – Salaries		\$1,320,583.00
200 <u>Personnel Services – Employee Benefits</u>		
220 Social Security Contributions		97,610.00
230 PSERS Retirement Contributions		211,857.00
270 Group Insurance – Self-Insurance		153,012.00
280 Other Post-Employment Benefits (OPEB)		19,600.00
Total Personnel Services – Employee Benefits		\$482,079.00
500 <u>Other Purchased Services</u>		
599 Other Miscellaneous Purchased Services		35,520.00
Total Other Purchased Services		\$35,520.00
600 <u>Supplies</u>		
610 General Supplies		161,706.00
Total Supplies		\$161,706.00
800 <u>Other Objects</u>		
890 Miscellaneous Expenditures		569,078.00
Total Other Objects		\$569,078.00
Total 3000 Operation of Non-Instructional Services		\$2,568,966.00

LEA : 123463603 Hatboro-Horsham SD

Printed 1/2/2020 9:54:46 AM

Child Care Operations Fund (52)

3300 Community Services

	<u>Elementary</u>	<u>Secondary</u>	<u>Federal</u>	<u>Total</u>
100 <u>Personnel Services – Salaries</u>				
100 Personnel Services – Salaries				1,320,583.00
Total Personnel Services – Salaries				\$1,320,583.00
200 <u>Personnel Services – Employee Benefits</u>				
220 Social Security Contributions				97,610.00
230 PSERS Retirement Contributions				211,857.00
270 Group Insurance – Self-Insurance				153,012.00
280 Other Post-Employment Benefits (OPEB)				19,600.00
Total Personnel Services – Employee Benefits				\$482,079.00
500 <u>Other Purchased Services</u>				
599 Other Miscellaneous Purchased Services				35,520.00
Total Other Purchased Services				\$35,520.00
600 <u>Supplies</u>				
610 General Supplies				161,706.00
Total Supplies				\$161,706.00
800 <u>Other Objects</u>				
890 Miscellaneous Expenditures				569,078.00
Total Other Objects				\$569,078.00
Total 3300 Community Services				\$2,568,966.00

	<u>Food Service(51)</u>	<u>Child Care Operations(52)</u>	<u>Other Enterprise(58)</u>	<u>Internal Service(60)</u>	<u>Total</u>
3000 <u>Operation of Non-Instructional Services</u>					
3100 Food Services	2,097,415.95				2,097,415.95
3300 Community Services		2,568,966.00			2,568,966.00
Total Operation of Non-Instructional Services	\$2,097,415.95	\$2,568,966.00			\$4,666,381.95
TOTAL ACTUAL EXPENDITURES & OTHER FINANCING USES	\$2,097,415.95	\$2,568,966.00			\$4,666,381.95

LEA : 123463603 Hatboro-Horsham SD

Printed 1/2/2020 9:55:00 AM

Fund	School	School Number	Local Personnel	Local Nonpersonnel	State Personnel	State Nonpersonnel	Federal Personnel	Federal Nonpersonnel	Total	Explanation
10										
	Blair Mill El Sch	5079	4,600,343.18	1,217,929.45	1,160,888.10	294,225.33	261,324.40	58,509.61	7,593,220.07	
	Hallowell El Sch	3271	7,358,998.77	1,956,166.06	1,857,029.74	398,549.79	309,345.10	69,261.27	11,949,350.73	
	Hatboro-Horsham SHS	3272	18,505,787.12	3,638,096.98	4,669,901.20	918,067.05	622,387.00	139,350.20	28,493,589.55	
	Keith Valley MS	6639	13,025,514.93	2,322,857.84	3,286,964.64	586,168.88	427,149.20	95,637.18	19,744,292.67	
	Pennypack El Sch	3267	3,292,559.83	531,518.41	830,871.39	134,127.68	135,392.40	30,313.88	4,954,783.59	
	Simmons El Sch	3270	9,401,997.54	1,952,941.77	2,372,576.71	492,821.25	280,930.30	62,899.29	14,564,166.86	
Total			56,185,201.37	11,619,510.51	14,178,231.78	2,823,959.98	2,036,528.40	455,971.43	87,299,403.47	